

RUSSIAN ACADEMY OF SCIENCES

NATIONAL GEOPHYSICAL COMMITTEE

РОССИЙСКАЯ АКАДЕМИЯ НАУК

НАЦИОНАЛЬНЫЙ ГЕОФИЗИЧЕСКИЙ КОМИТЕТ



NATIONAL REPORT

for the

International Association of Geodesy

of the

International Union of Geodesy and Geophysics

2007–2010

НАЦИОНАЛЬНЫЙ ОТЧЕТ

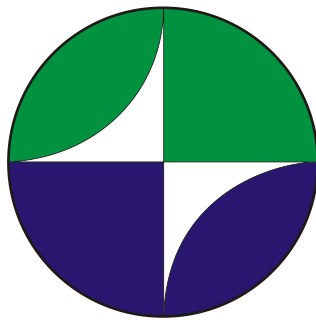
Международной ассоциации геодезии

Международного

геодезического и геофизического союза

2007–2010

Москва 2011 Moscow



**Presented to the XXV General Assembly
of the
International Union of Geodesy and Geophysics**

**К XXV Генеральной ассамблее
Международного геодезического и геофизического
союза**

RUSSIAN ACADEMY OF SCIENCES

National Geophysical Committee

NATIONAL REPORT

for the

International Association of Geodesy

of the

International Union of Geodesy and Geophysics

2007–2010

Presented to the XXV General Assembly

of the

IUGG

2011

Moscow

This report submitted to the International Association of Geodesy (IAG) of the International Union of Geodesy and Geophysics (IUGG) contains results obtained by Russian geodesists in 2007-2010. In the report prepared for the XXV General Assembly of IUGG (Australia, Melbourne, 28 June – 7 July 2011), the results of principal researches in geodesy, geodynamics, gravimetry, in the studies of geodetic reference frame creation and development, Earth's shape and gravity field, Earth's rotation, geodetic theory, its application and some other directions are briefly described.

The period from 2007 to 2010 was still difficult for Russian geodesy mainly due to the permanent reformation of state geodetic administration as well as state education structure and organization.

The report is organized as a sequence of abstracts of principal publications and presentations for symposia, conferences, workshops etc. Each of the report paragraphs includes a list of scientific papers published in 2007–2010 including those prepared in cooperation of Russian scientists and their colleagues from other countries. Some interesting international and national scientific events are reflected in the text too.

For some objective reasons not all results obtained by Russian scientists on the problems of geodesy are included in the report.

Editorial Board

V.P. Savinykh (*Chief Editor*), V.I. Kaftan (*Deputy Chief Editor*).

© 2011 National Geophysical Committee of Russia

CONTENTS

| | |
|---|----|
| Preface..... | 6 |
| Obituary Notice..... | 7 |
| 1. Reference Frames..... | 9 |
| 2. Gravity Field | 21 |
| 3. Geodynamics and Earth Rotation | 30 |
| 3.1 Geodynamics | 30 |
| 3.2 Earth's Rotation..... | 38 |
| 4. Positioning and Applications | 48 |
| 5. Theory and Computation | 53 |
| The Joint Height System Establishment Tasks (Demianov G.V., Mayorov A.N., Sermiagin R.A.)..... | 60 |

Preface

This report submitted to the International Association of Geodesy (IAG) of the International Union of Geodesy and Geophysics (IUGG) contains results obtained by Russian geodesists in 2007-2010. In the report prepared for the XXV General Assembly of IUGG (Australia, Melbourne, 28 June – 7 July 2011), the results of principal researches in geodesy, geodynamics, gravimetry, in the studies of geodetic reference frame creation and development, Earth's shape and gravity field, Earth's rotation, geodetic theory, its application and some other directions are briefly described.

The period from 2007 to 2010 was still difficult for Russian geodesy mainly due to the permanent reformation of state geodetic administration as well as state education structure and organization.

The report is organized as a sequence of abstracts of principal publications and presentations for symposia, conferences, workshops etc. Each of the report paragraphs includes a list of scientific papers published in 2007–2010 including those prepared in cooperation of Russian scientists and their colleagues from other countries. Some interesting international and national scientific events are reflected in the text too.

For some objective reasons not all results obtained by Russian scientists on the problems of geodesy are included in the report.

Section of geodesy

Dr. V.P. Savinykh, Chairman, Corr. Member of RAS

Dr. V.I. Kaftan, Vice-chairman

Obituary Notice



26.10.2010 Maria Ivanovna Jurkina passed away on her 87th year.

The name of M.I. Jurkina – an outstanding scientist - geodesist of our country - is widely known in the world of geodesy, first of all as an expert in the field of a theoretical geodesy.

M.I. Jurkina accomplished researches on the following fundamental scientific directions of a theoretical geodesy.

- *Investigation of Molodenskiy's task in ellipsoidal system of coordinates.*
- *The theory of heights in the gravitational field of the Earth.*
- *Joint determination of a gravity field and movements of the Earth's crust by repeated determination of levelling and gravimetry, and in establishing of the reference system origin.*
- *Improvement in calculation of nutation taking account for the displacement of the center of terrestrial mass due to the action of forces.*

Maria Ivanovna was born on December, 4, 1923 in Tver.

Graduating in 1941 from the secondary school, M.I. Yurkina first of all started as the student of optical and mechanical faculty, and then, in October, 1941 she changed to the faculty of geodesy where she studied astronomical geodesy with interest and diligence.

In October, 1946. M.I. Yurkina started to work as an engineer in the staff of the Central Research Institute of Geodesy, Aerial Survey and Cartography (TSNIIGAiK), since 1948 - as the post-graduate student and since 1950 - as the senior engineer. In 1953-55 she worked also in the Institute of the Scientific Information. Since 1955 she worked in TSNIIGAiK as the junior scientific researcher, since 1960 - as the senior scientific researcher, since 1988 - as the senior scientific researcher-adviser of geodetic department in TSNIIGAiK.

In 1951 M.I.Yurkina had read the thesis for PhD devoted to calculation of deviations of a plumb in mountain area of Crimea using Molodenskiy formulae.

In spite of having suffered from political repressions, M.I.Yurkina mastered modern scientific school of M.S. Molodenskiy, and has traversed the school of institute of the scientific information which has helped her to become not only outstanding scientist, but also the perfect expert in scientific literature.

In 1976 Maria Ivanovna has got the degree of doctor of sciences after reading her thesis on a vital topic «The determination of an external terrestrial gravitational field through analyses of the simple layer density using ground based and satellite data with topographical corrections».

The premium of F.N.Krasovsky's name was awarded to Yurkina M.I. for «The cycle of works on development of theoretical grounds for the solution of fundamental problems of geodesy», implemented by Doctor of Technical sciences M.I.Jurkina during the period 1955—2003, and by Doctor of Tech.Sci. V.F.Eremeev who worked with TSNIIGAiK in 1937—1972. Maria Ivanovna is the author of more than 300 scientific papers not only in the field of geodesy, but also in history and literary criticism.

Maria Ivanovna was a permanent member of the Section of Geodesy of the National Geophysical Committee of RAS.

Talent, wide erudition, persistence, great capacity for work, adherence to principles and insistence in researches have allowed Maria Ivanovna to comment on the most important inquiries of a science and practice. Having the strong character and bright individuality Maria Ivanovna was very modest person. She was easygoing and liked to work in the collective.

Memory of Maria Ivanovna Yurkina remains for ever in our hearts, and her works will be useful to many generations of researchers.

1. Reference Frames

Demianov G.V., gleb@geod.ru, *Central Research Institute of Geodesy, Aerial Survey and Cartography*

Kaftan V.I., kaftan@geod.ru, *Central Research Institute of Geodesy, Aerial Survey and Cartography*

Mazurova E.M., e_mazurova@mail.ru, *Moscow State University of Geodesy and Cartography*

Tatevian S.K., statev@inasan.ru, *Institute of Astronomy of RAS*

In the frames of the National Program on the improvement of the Fundamental Astro-Geodetic Network (FAGN) a new network of the nine GPS/GLONASS sites are established in Russia. Together with the IGS sites operating till now, there are more than 30 permanent GNSS sites in the country with combined receivers. Several of these sites are collocated with the seismological automatic stations of the IRIS network. The main objective of the Program is definition, realization and maintenance of the unified Reference Frame, focusing on both spatial and vertical components. Every site of this network is tied by precise leveling with the two nearest points of the State Leveling network (in total 400000 km of lines). The repeated absolute gravity measurements at the permanent GPS/GLONASS sites are carried out for estimation of precise vertical components of the coordinates. Several of these sites are already collocated with the existing SLR, VLBI and DORIS stations, and a few additional collocations are planned for further improvement in accuracy and stability of the reference network. Integrating with GGOS project is also considered.

The GPS/ GLONASS measurements from all these sites are collected and analyzed by the Analyses center of the Central Research Institute of Geodesy and Cartography, which has been established in cooperation with the BKG. Joint scientific analyses of all space geodetic observations will be carried out in collaboration with the analyses centers of the Russian academy of sciences and Space Agency [Demianov G.V., Tatevian S.K., 2010].

At present Russian coordinate reference frame (RUREF) consists of the four main geodetic networks of different orders:

- Fundamental astro-geodetic network FAGN (45 stations)
- Precise geodetic network PGN (about 250 points)
- 1st order satellite geodetic network SGN-1 (created in economical developed regions)
- Classical State geodetic network SGN of 1-4 orders and densification (about 500 000 points).

Two highest orders of the RUREF are shown at the Fig.1.

FAGN consists of 37 permanent GNSS stations and 8 periodically observed stations. The 25 permanent stations belong to the Federal Service of Registration, Cadastre and Cartography (Rosreestr). Russian Academy of Sciences (RAS) and Federal Agency on Technical Regulation and Metrology (Rosstandart) maintain,

respectively, 9 and 4 permanent sites jointly with Rosreestr. The rest 7 permanent sites belong to RAS. Three of them are the VLBI observatories of the Institute of Applied Astronomy of RAS.

All another PGN, SGN-1 and SGN points are in responsibility of Rosreestr.

The main part of PGN sites equipped by special geodetic concrete piers using special GNSS antenna mounts. See example in Fig. 3.

Every FAGN and PGN site includes the main GNSS geodetic center, 2 benchmarks of precise spirit leveling, and 2 ground pillars of the classical SGN of the 1-2 orders tied each other by precise GNSS measurements.

Geodynamical test areas are established in the frame of the common national reference frame and respond to the specifications of PGN-1 or precise permanent local networks.

Central Research Institute of Geodesy, Aerial Survey and Cartography has organized Precise GLONASS Ephemeris Center. Cooperative Virtual Data Analysis Center is working at the base of the Precise GLONASS Ephemeris Center in response of the agreement between Federal Agency of Registration, Cadastre and Cartography (former Roskartography) and Bundesamt für Kartographie und Geodäsie (BKG) [<http://84.47.145.86>].

Observation and monitoring of global changes require a construction and continuous maintenance of multidisciplinary reference frames. Monitoring of global deformations and mass exchange processes is a main task of IAG's Global Geodetic Observing System. In view of this, global distributed gravimetric networks present the observation component of high/highest importance. The long and successful experience of global space reference frame development allows us to differentiate reference frame and reference system concepts. In this case three main and clear definitions are distinguishing:

- Coordinate systems are abstract mathematical models.
- (Coordinate) reference systems are semiabstract physical models.
- (Coordinate) reference frames are real technological model or network.

Global gravity monitoring today becomes the task of global space reference frames. It necessitates harmonizing a particular terminology. Today the main global gravimetric network/frame is the International Absolute Gravity Basestation Network (IAGBN). It needs to be closely collocated with sites of the International Terrestrial Reference Frame (ITRF) and modernized to a permanent service by coinciding with superconducting gravimeter network. Therefore it will be useful to have more rigorous definitions of gravimetric system and/or gravimetric reference system and gravimetric reference frame.

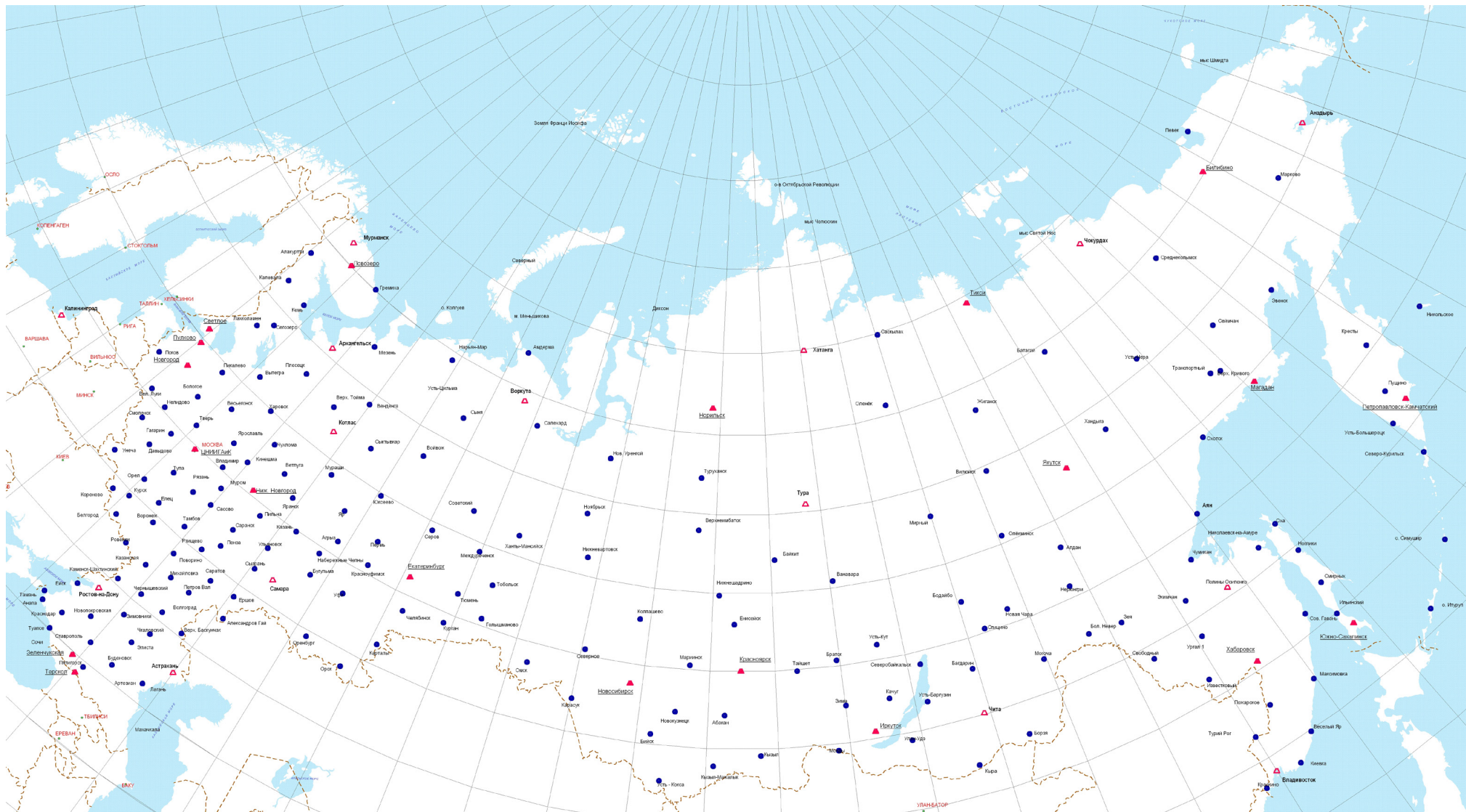


Fig.1. Fundamental astro-geodetic (red trapeziums) and precise geodetic (blue dots) networks of the Russian coordinate reference frame



Fig.2. Main Russian Vertical Reference Frame (first order leveling – solid, second order leveling – thin, planned - red)



Fig.3 The point of the precise geodetic network



- Legend**
- ▼ Sites of Fundamental gravimetric network
 - ▼ Sites of the main First order gravimetric network

Fig.4. Main gravimetric 1-st order network/reference frame of Russia.

Several papers are devoted to discussion of the necessity of harmonizing modern and classical definitions in geodetic usage [Kaftan V.I., 2008abc, Kaftan V.I., 2009a].

The condition of the Russian gravimetric reference frame is described in [Gusev N.A., Scheglov S.N., 2010].

The main features of a national reference frame are its complexity and metrological provision. International comparisons of absolute gravity meters are the more important supports of metrological quality of national reference frames.

The series of international comparisons of absolute gravity meters are described in [Makinen J., et al., 2008a & b]. The first comparison was performed in 2004 at the Metsähovi Geodetic Observatory (latitude 60 deg 13 min N, longitude 24 deg 24 min E) of the Finnish Geodetic Institute (FGI). Simultaneous measurements were made between July 6 and July 17 with three gravimeters on three piers (AB, AC, AD). Each gravimeter had two independent setups on each pier. These gravimeters were the FG5 no. 101 and FG5 no. 301 of BKG, and the GBL-P no. 001 of TsNIIGAiK. The FG5 no. 220 of IfE performed a more succinct program on piers AB and AC July 3 to 5. The FG5 no. 221 of the FGI only could perform the full program September 28 to October 8. The possibility of using the record of the superconducting gravimeter GWR T020 at Metsähovi to connect this far-apart (in time) absolute measurement to the others is investigated. The second comparison was performed in October 2005 at the Zvenigorod Observatory (latitude 55 deg 42 min N, longitude 36 deg 46 min E) of the Institute of Astronomy of the Russian Academy of Sciences, on two piers. They were occupied by the GBL-P no. 001 and the FG5-110 of the TsNIIGAiK, and by the FG5-221 of the FGI, with two setups on each pier. The third comparison was performed in June 2007 at two field sites: Pulkovo (latitude 59 deg 46 min N, longitude 30 deg 20 min E) and Lovozero (latitude 67 deg 53 min N, longitude 34 deg 37 min E). Both sites have a single pier. The FG5-110 of the TsNIIGAiK and the FG5-221 of the FGI participated, with two setups at each site. In Metsähovi and Zvenigorod a relative network between the piers were observed at multiple levels using Scintrex CG-5 and LaCoste&Romberg feedback gravimeters. Researchers evaluate the results, analyze the role of the relative measurements, and discuss the methodology of combining several comparisons for the determination of their reference gravity values and of the offsets of the gravimeters.

The fourth comparison was performed in Irkutsk in November 2010 at the site of the FGUP VostSib AGP (East Siberian Division of the Federal Service of Registration, Cadastre and Cartography). See Fig. 5.

Two new Russian gravity meters were compared using four postaments. The FG5 no. 221 of the FGI could not be transferred to the site due to unexpected custom problems. The next gravimeter comparison planned to be performed in 2011 in Moscow.



Fig. 5 Comparison of absolute gravity meters at the site of East Siberian Division of the Federal Service of Registration, Cadastre and Cartography

The comparison was carried out together with the International Meeting on Problems of Geodesy, Geodynamics and Gravimetry at the East Siberian Division of the Federal Service of Registration, Cadastre and Cartography (Fig.5)

Complex character of large scale reference frames requires the accomplishment of special local geodetic ties between points of different techniques. Research on the usage of GPS for VLBI and GPS reference point's collocation are presented in the paper [Kaftan V.I., 2009b]. Preliminary experiments on three Russian VLBI sites of Institute of Applied Astronomy of the RAS showed that the accuracy of a tie has a sub centimeter level. More accurate ties using GPS need to provide the best observation conditions. In a contrast to geodetic electro distance and optical ties, GPS ties have not transformed coordinate errors immanent for the classical approach.

The papers [Mazurova E.M. 2009, Mazurova E.M., Malinnikov V.A., 2010] discuss the history of the GLONASS, modern tendencies and prospects in its development. The main differences between GLONASS and GPS are considered. The role of the systems in global reference frame construction is described.

The history of GLONASS development has been long and difficult. Technical, but mainly political problems of the country have not allowed the system to develop dynamically. Over the last seven years there have been essential changes both in the development of the system and in the field of its application. GLONASS satellites are constantly modernized (GLONASS, GLONASS-M, GLONASS-K, GLONASS-KM). Their satellite life time increases and the number of working frequencies also increases, which results in the system higher accuracy.



Fig. 6 The participants of the International Meeting on Problems of Geodesy, Geodynamics and Gravimetry

Russia worked out a state geocentric coordinate system PE-90 (PZ-90) to ensure geodetic support for orbital flights and solve navigation problems. Along with the coordinate system PE-90 (PZ-90), Russia is actively using WGS-84. Therefore the paper analyzes the two coordinate systems and shows their relationships. Visibility zones of the GLONASS over Newcastle are given according to the information of the analytical centre of coordinate-time and navigation support of Russia.

The instability of the GLONASS does not allow yet the Russian system to compete on equal footing with the GPS. However, even now, the GLONASS can be used for many purposes not only in Russia, but also abroad.

The International conference “Space geodynamics and global process modeling” (APSG 2008) was held on 22-26 September 2008 in Novosibirsk. Report on the common usage GPS and GLONAS during the Russian Reference Frame development was presented by S.K. Tatevian, S.P.Kuzin [Tatevian S., Kuzin S., 2008].

GLONASS is a key element of the Russian Positioning, Time and Navigation service. The GLONASS state program foresees the full operation capability (24 satellites) was reached by the end of 2010. The second generation of satellites GLONASS-M have been launched with the L2 civil signal, extended lifetime and improved clock stability. GLONASS-K satellites are expected to have the L3 civil signal and Synthetic Aperture Radar function. An extension of the ground control and monitoring network up to 9-12 stations are planning and cooperation with GNSS is

foreseen. The combined GPS/GLONASS system is a main technology for development of the fundamental geodetic network and for crust movement studies along the North Eurasian tectonic plate. In combination with GPS, GLONASS can benefit users already now especially in the urban areas. Results of GLONASS data analysis performed at the Institute of Astronomy (Moscow) with the use of GIPSY-OASIS2 software for 16 globally distributed sites show that residuals of the GLONASS solution are almost similar to those from the GPS solution [Kuzin S., Revnivykh S., Tatevyan S., 2007].

Taking into account recommendations of the International Earth Rotation and Reference Systems Service (IERS) and International DORIS service (IDS), a reprocessing of the DORIS data for the period of 1993.0-2010.0 has been performed aiming to obtain a unified coordinated solution of the IDS analysis centers for the developing of the new version of the Terrestrial Reference Frame - ITRF2008. The weekly solutions of coordinates of all 71 DORIS ground sites and Earth Observations parameters (EOP) have been estimated with the use of new improved satellite surface models, submitted by CNES, and with measurement data of the satellites SPOT2, SPOT3, SPOT4, SPOT5, TOPEX, and ENVISAT. After the transformation of the free-network solution into a well-defined reference frame ITRF2005 (exactly, long-term cumulative IGN solution: ign07d02) weekly coordinates of the sites were estimated with the internal precision at the level of 5-40 mm for majority of the stations.

Russian scientific community pays special attention for historical fragments of the national reference frame. There is a series of works devoted to the "Struve Geodetic Arc" research and public awareness [Kaptüg V., 2008, 2009, 2010; Mazurova E.M., Aleksashina E.V., 2010].

Procedures of space fixation of global coordinate system are proposed in papers [Gerasimenko M.D., Kolomiets A.G., 2008, Kolomiets A.G., 2010]. The authors recommend using the free global network adjustment in a reference to more stable vertical or horizontal site velocities. The approach allows the authors to reject some quality geological models in the process of orientation site velocity vectors.

Russian gravimetric team from Central Research Institute of Geodesy, Aerial Survey and Cartography, and Moscow State University of Geodesy and Cartography, and Vietnam Institute of Geodesy and Cartography (VIGAC) carried out the joint Russian-Vietnam field campaign on gravimetric reference frame modernization in Socialist Republic of Vietnam in 2010-2011. The gravity measurements have performed by new Russian absolute ballistic gravity meter for field operation constructed by the Institute of Automation and Electrometry of the Siberian Branch of the Russian Academy of Science (Fig. 5) and described in [Stus Yu.F., et al., 2010]. The field campaign scenes showed in photos below.



Fig.7 Absolute gravity measurement at a field gravimetric point.

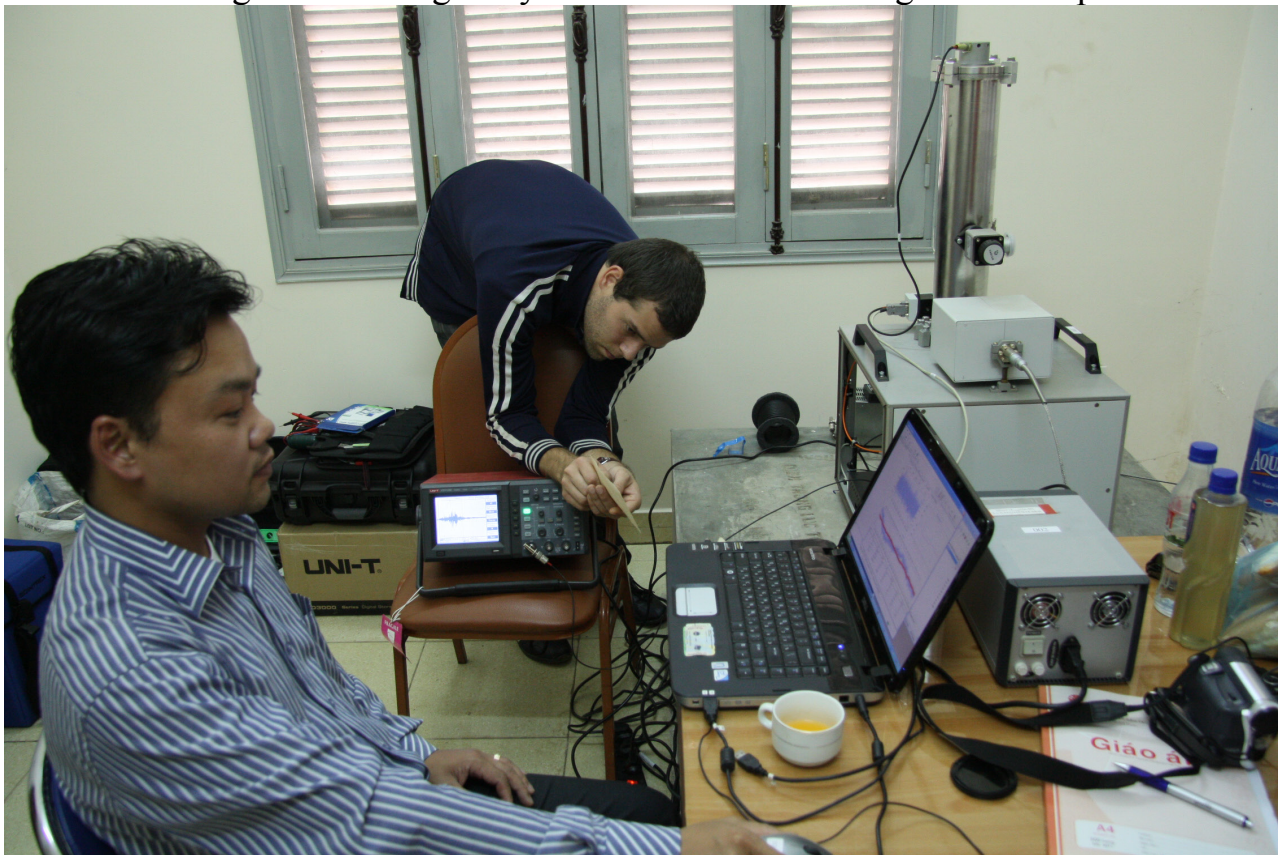


Fig.8 Absolute gravity measurement at a stationary gravimetric station.

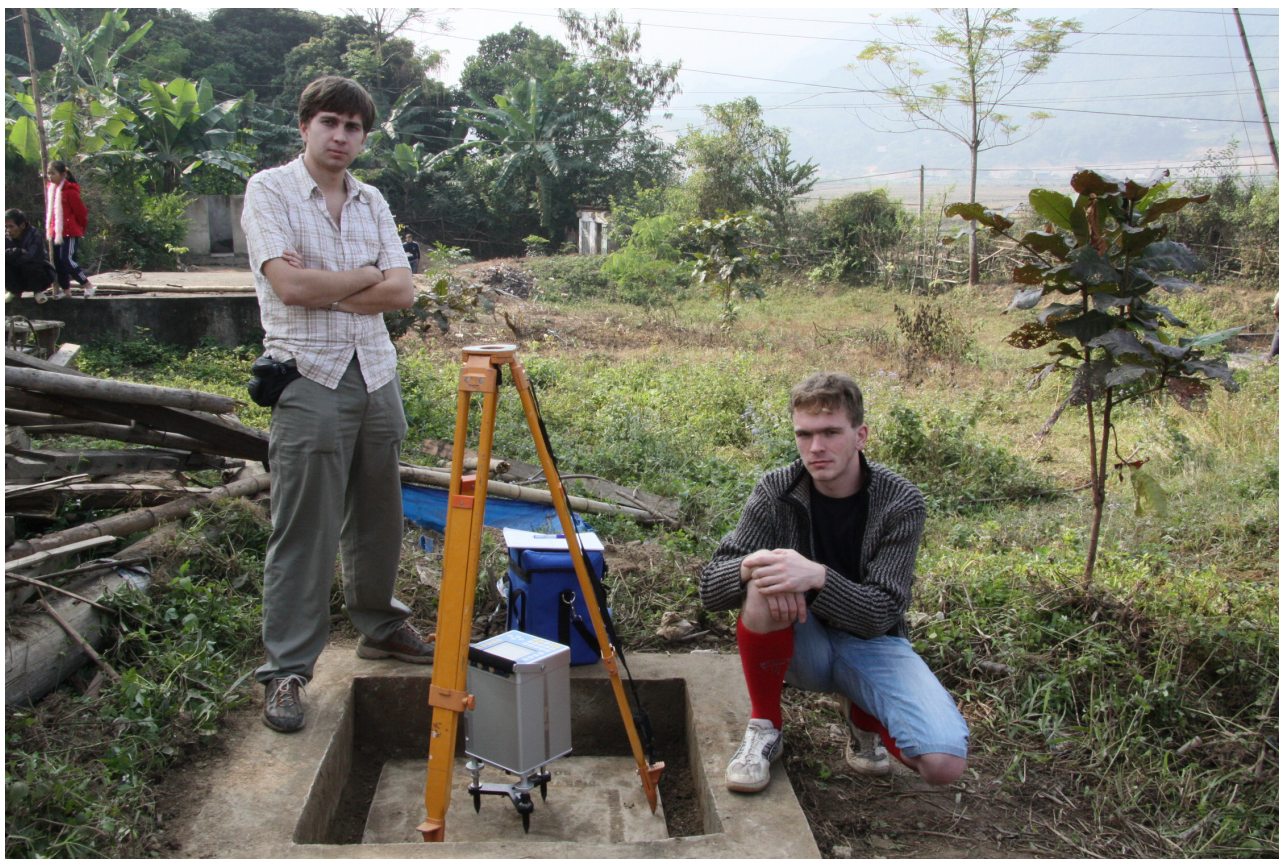


Fig.8 Relative gravity measurement at a field gravimetric point.

Some researches on celestial reference frame creation and development are described in the section 3.2.

References

1. Brovar B.V., Demianov G.V. (2010) Geodetic coordinate systems and Earth's gravitation field parameters. Бровар Б.В., Демьянов Г.В. Геодезические системы координат и параметры гравитационного поля Земли / Гравиметрия и геодезия. — М.: Научный мир, 2010. — с. 267-275
2. Gerasimenko M.D., Kolomiets A.G., (2008) On the problem of coordinate system fixation of free geodetic networks. Герасименко М.Д., Коломиец А.Г. К вопросу о фиксации системы координат свободных геодезических сетей // Известия вузов. Геодезия и аэрофотосъемка, № 2, 2008, с. 29-33.
3. Gusev N.A., Scheglov S.N. (2010) Reference gravimetric networks. Гусев Н.А., Щеглов С.Н. Опорные гравиметрические сети / Гравиметрия и геодезия. — М.: Научный мир, 2010. — с. 327-340
4. Demyanov G.V., Tatevian S.K. (2010) Integration of the Russian Geodetic Network into the GGOS / G4 Integration of Geodetic Techniques: A Coordinated GGOS Approach, EGU 2010, Wien
5. Kaptüg V. (2008) Index of Field and Other Important Manuscripts Relating to the Scandinavian Segment of the World Heritage Monument "Struve Geodetic Arc" // FIG WW, Stockholm, Pre-Conference Workshop, History of Surveying, HS5: http://www.fig.net/pub/fig2008/papers/hs05/hs05_03_kaptug_2763.pdf

6. Kaptüg V. (2009) Geometry of the “Struve Arc” Compared with Up-to-date Geodetic Data. FIG WW, Eilat, Pre-Conference Workshop, History of Surveying, HS1: http://www.fig.net/pub/fig2009/papers/hs01/hs01_kaptug_3357.pdf
7. Kaptüg V. B. (2010) “The Struve Geodetic Arc” as World Heritage. http://metacarto-semiotics.org/uploads/mcs_vol3_2010/MCS_Vol3_petersburg_abstracts.pdf
8. Kaftan V.I. (2008a) Frames and Systems in Gravimetry and Geodesy: Chaos and Order in Terminology. International Symposium, Terrestrial Gravimetry: Static and Mobil Measurements, 20-23 August 2007, Saint Petersburg, Russia, Proceedings, State Research Center of Russia Elektropribor, 2008, p.183-185
9. Kaftan V.I. (2008b) Coordinate and reference systems in geodesy, geoinformatics and navigation. Кафтан В.И. Системы координат и системы отсчета в геодезии, геоинформатике и навигации // Геопрофи.- 2008.- №3.- 60-63, №4.-62-65
10. Kaftan V.I. (2008c) National coordinate systems and its possibility of usage. Кафтан В.И. Государственные системы координат и возможности их использования // Кадастр недвижимости.- 2008.- №3.- (12).-с.26-28
11. Kaftan V.I. (2009a) Geodetic data yesterday and now. Кафтан В.И. Исходные геодезические даты вчера и сегодня// Кадастр недвижимости .- 2009.- №3.- (16).-с.73-77
12. Kaftan V.I. (2009b) Experience of geodetic tie between VLBI antennas and points of fundamental astro-geodetic network/ Кафтан В.И. Опыт геодезической привязки антенн РСДБ к пунктам фундаментальной астрономо-геодезической сети / Фундаментальное и прикладное координатно-временное и навигационное обеспечение (КВНО-2009). Третья всероссийская конференция. СПб.: ИПА РАН, 2009.- с. 158-159
13. Kolomiets A.G. (2010) Cinematic coordinate system fixation. Коломиец А.Г. Фиксация кинематической системы координат // Информатика и системы управления, № 1, 2010, с. 10-18.
14. Kuznetsov Yu.G. (2010) State leveling network (Main Vertical Reference Frame) Кузнецов Ю.Г. Государственная нивелирная сеть (главная высотная основа) / Гравиметрия и геодезия. — М.: Научный мир, 2010. — с. 287-299
15. Makinen J., Bilker-Koivula M., Routsalainen H., Kaftan V.I., Gusev N.A., Korolev N.N., Yushkin V.D., Falk R., Hoppe W., Gitlein O. (2008) Comparison of Absolute Gravimeters in Metsahovi in 2004 and in Zvenigorod in 2005. International Symposium, Terrestrial Gravimetry: Static and Mobil Measurements, 20-23 August 2007, Saint Petersburg, Russia, Proceedings, State Research Center of Russia Elektropribor, 2008, p.123
16. Mäkinen J., Bilker-Koivula M., Ruotsalainen H., Kaftan V., Gusev N., Korolev N., Yushkin V., Falk R., Hoppe W., Gitlein O. Comparisons of six absolute gravimeters at four sites 2004–2007 IAG International Symposium “Gravity, Geoid and Earth Observation 2008” GGEO2008, Chania, Crete, 23–27 June 2008
17. Mayorov A.N. (2010) Satellite leveling. Майоров А.Н. Спутниковое нивелирование / Гравиметрия и геодезия. — М.: Научный мир, 2010. — с. 309-312

18. Mazurova E.M., V.A. Malinnikov “GLONASS”, 2010, the International GNSS Service (IGS), Newcastle upon Tyne, England, 28 June -2 July <http://www.ceg.ncl.ac.uk/igs2010/abstract.htm>
19. Mazurova E.M. (2009) “A Review of GLONASS” (poster), International Conference, Spatial Sciences, Curtin University, Perth, Australia, June 2009.
20. Mazurova E.M., Aleksashina E.V. (2010) “Struve’s Arc”, 2010, In collected scientific reports of the international conference “175 years of the higher geodetic education”, Moscow, pp.76-77.
21. Molodensky S.M. (2010) Tides, nutation and inner Earth’s structure. Молоденский С.М. Приливы, нутация и внутреннее строение Земли / Гравиметрия и геодезия. — М.: Научный мир, 2010. — с. 64-73
22. Nepoklonov V.B. (2010) Space methods of determination of Earth’s geodetic constants. Непоклонов В.Б. Космические методы определения системы геодезических параметров Земли / Гравиметрия и геодезия. — М.: Научный мир, 2010. —с. 275-287
23. Pic M.V., Yurkina M.I. (2010) Coordinate and reference systems in geodesy and the Earth’s shape theory. Пик М.В., Юркина М.И. Системы координат и системы отсчета в геодезии и теории фигуры Земли / Гравиметрия и геодезия. — М.: Научный мир, 2010.— с. 56-64
24. Stus Yu.F., Kalish E.N., Smirnov M.G., Bunin I.A., Nosov D.A. (2010) The Absolute Ballistic Gravimeter for Field Operations // Report on the IAG SYMPOSIUM on TERRESTRIAL GRAVIMETRY: STATIC and MOBILE MEASUREMENTS (TG-SMM2010) 22 - 25 June 2010 Russia, Saint Petersburg
25. Revniviykh S., Tatevyan S. (2007) On the use of combined GLONASS/GPS constellations for geodynamic studies // Advances of Space Research , 2007 (Elsevier)
26. Tatevyan S., Kuzin S. (2008) On the combined use of GPA/GLONASS techniques for the development of the Russian Geodetic Reference Network, // Материалы международного симпозиума «Космическая геодинамика и моделирование глобальных геодинамических процессов, 22-26 сентября 2008. СО РАН, Новосибирск, РФ, с. 58-83.

2. Gravity Field

Boyarsky E.A., ernst@ifz.ru, *Shmidt Institute of the Physics of the Earth RAS*
Mazurova E.M., e_mazurova@mail.ru, *Moscow State University of Geodesy and Cartography*

Vitushkin L.F., L.F.Vitushkin@vniim.ru, *All-Russian D.I. Mendeleev Research Institute for Metrology*

Questions of calculation of anomaly of height on basis of wavelet-transformation are considered in article [Mazurova E.M., A.S. Bagrova, 2008]. Results of the spent

experiment have shown, that compression of a kernel of Neumann's integral more than on 23% leads to accuracy loss at calculation of height anomaly of an order of two decimeters. Comparison of speed of calculations of a file in the size 32X32 a method of wavelet-transformation and a method of the Fast Fourier Transform (FFT) has shown considerable advantage of method of the FFT when we wish to receive heights of the geoid with centimeter accuracy. It occurs because at calculation of Neumann's integral by a wavelet-transformation method it is impossible to compress essentially a kernel of Neumann's integral without loss of accuracy of calculation of anomaly of height. Thus, it is impossible to recommend a method of wavelet-transformation for practical use at calculation of height anomaly in the central zone if only we do not wish to offer accuracy for economy of machine memory.

The paper [Mazurova E.M., Kuvkina N.A., Aleksashina E.V., 2008] presents the deduction of ellipsoid corrections in evaluating the disturbance potential from gravity disturbances. Spherical approximation makes the basis of almost all formulas of physical geodesy. From studies by D. Lelgemann, spherical approximation in application of Stokes' formula to determining the average height of the geoid all over the Earth leads to an error of the order of ± 0.2 m. The modern accuracy of determining the anomalous potential of the gravitational field requires the flattening of the reference-ellipsoid to be taken into account. At present, satellite navigation technologies (GLONASS, GPS, etc.) allow gravity disturbances δg to be calculated confidently, they being the function of the geodetic coordinates B, L, H defined from satellite measurements.

The purpose of the work [Mazurova E.M., 2009] is development of an image Hartly for a kernel of the modified Vening-Meinez's integral. The concept of the deflection of the vertical is significant in physical geodesy. As the direction of the deflection of the vertical is defined by gravity, and evasion from them - gravity anomalies knowing these anomalies it is possible to find and deflection of the vertical. With development GNSS-technologies, it is possible to confidently define the gravity disturbance. Therefore we can define the deflection of the vertical under a modified Vening-Meinez's formula. This integral is an integral of convolution and for its calculation in the central zone (radius to 10) it is effective to use two-dimensional fast Hartly transformation, using thus flat approximation. If the size of the central zone is to increase, it is necessary to change the integrated kernel. Fast Hartly transformation is especially effective, if the analytical image Hartly of an integrated kernel is known.

Spherical approximation makes the basis for a majority of formulas in physical geodesy. However, the present-day accuracy of determining the perturbing potential requires ellipsoidal approximation.

The papers [Mazurova E. M., Yurkina M. I., 2010a, Mazurova E. M., Yurkina M. I., 2010b] deals with constructing Green's function for an ellipsoidal Earth by a spherical harmonic expansion and using it for determining the perturbing potential. From the result obtained, the part corresponding to spherical approximation has been extracted. The remaining expansion is represented by a series whose terms decrease

in-versely proportional to the power number of the harmonic of the spherical harmonic expansion of the gravity force.

The Green function is known to depend only on the geometry of the surface where boundary values are set. Thus, it can be calculated irrespective of the gravity data completeness.

Any changes of gravity data do not have an effect on Green's function and they can be easily taken into account if it has already been computed. Such a solution method, therefore, can be useful in determining the perturbing potential of an ellipsoidal Earth.

Now, the central place in geodesy has been taken by satellite methods of coordinate determination using the signals of the GPS and GLONASS satellite navigation systems. Geodetic heights, however, computed from satellite measurements and normal heights determined by geometric leveling, exist independently from each other. The relationship between geodetic heights in a coordinate space and normal heights is executed by height anomalies which should be known with high accuracy. The problem of accurate determination of the gravity field transformants is caused by the fact that the classical methods of solving problems of physical geodesy are based on deriving and resolving some integrated equation. Continuous errorless values of gravity anomalies across the whole surface of the Earth are needed for that. But it is practically impossible to make a continuous gravimetric leveling, and the classical approach is not capable to produce an accurate answer without gravimetric leveling being completed. In practice, the initial information is discrete, with a lot of measuring errors, and known not across the whole surface of the Earth. Notice that Neumann's integral from which it is possible to calculate height anomaly is a convolution integral. Therefore, it is possible to use linear transformations for its calculation, such as the Fast Fourier Transform and wavelet-transform. In computing height anomaly, M.S.Molodensky's combined method is applied; with it, numerical integration is conducted only within a certain "limited area". The influence of the distant field zone is taken into account by expanding the gravity anomaly into series by spherical functions. The paper [Mazurova E.M., 2010] discusses the algorithm for calculating the height anomaly in the "limited area" in flat approximation. Neumann's integral calculations have been done on the basis of the fast discrete Wavelet-Transform. The results of the research into compressing the Neumann integral kernel that can be performed in calculating this integral by the Wavelet-Transform method are presented. An efficiency comparison of applying the Fast Fourier Transform and Fast Wavelet-Transform to computing the Earth's gravity field transformants has been made.

10th International Geoid School "The Determination and Use of the Geoid" was held on 28 June – 3 July 2010 at the State Research Center of the Russian Federation – Concern CSRI Elektropribor, JSC (Saint Petersburg, Russia). Young geodesists from Russian Federation, Germany, Canada, Turkey, USA as well as researchers of geophysics, geology and engineering took part in the school. Modern theories of geodetic gravimetry were enlightened and practical exercises of global model computation, least square collocation and adjustment were passed.

To make a more exact mathematical model of the global atmosphere circulation and to improve the weather forecast one needs to take into account the Vertical Deflection Components (VDCs). The required accuracy for these tasks is 1–2'' now and twice better in future. The VDCs were calculated [Boyarsky E.A., et al., 2010] by integration of the free air gravity anomalies (taken from the Internet site of Scripps Institute of Oceanography) on the grid of $2' \times 2'$, an integration radius $R = 4,000$ km. Also the approaches to calculate the far zone contribution are discussed. As the first test the results are compared with the VDCs obtained from the global spherical harmonics expansion of the order of 1,800. For the Mariana trench area, where the variation of $W-E$ component exceeds 50'', the standard deviation from Wenzel's model is of 2''. The other region for testing with a more dense grid $1' \times 1'$ is the Kane fracture zone; standard deviations are about 0''.6.

The MAGELLAN-2 package, developed at the Russian Academy of Sciences' Institute for Physics of the Earth (IPE) to use in a Windows environment, is an elaboration of the previous MAGELLAN version [Boyarsky E.A., Afanasieva L.V., 2010]. It is oriented toward modern gravimeters and the growing demand for accuracy and detail in measuring the gravity forces at sea and in the air.

The results of the measurements of gravity field at all the stations of gravity micronetwork at the BIPM are presented [Jiang Z., Becker M., Vitushkin L., 2008]. The BIPM is located on the slope of the hill in the park St Cloud in Sevres, France. This micronetwork consists of two sites with nine gravity stations in the buildings and two outdoor gravity stations. The difference of the values of free-fall acceleration at the gravity stations is about 9 milligal.

The technical protocol for the International Comparisons of Absolute Gravimeters developed according to rules for the Key Comparisons [Agostino G.D., Germak A., Vitushkin L.F., 2008]. The results of KCs provide the technical basis for the Mutual Recognition Arrangement of national measurement standards and of calibration and measurement certificates issued by national metrology institutes. The MRA is signed by more than sixty National Metrology Institutes over the world. The development of such Technical Protocol for ICAGs means that one more step to the increase of the confidence in gravity measurements was done. The details of the Technical Protocol are discussed.

The organization of ICAG-2005, measurement strategy, calculation and presentation of the results were described in a technical protocol pre-developed to the comparison. Nineteen absolute gravimeters carried out 96 series of measurements of free-fall acceleration g at the sites of the BIPM gravity network. The vertical gravity gradients were measured by relative gravimeters. For the first time the budgets of uncertainties were presented. The result of ICAG-2005 is in a good agreement with that obtained in ICAG-2001 [Vitushkin L., Jiang Z., et al, 2010].

A new method of the measurement of the gravitational constant using two free-moving discs and laser displacement interferometry is proposed [Vitushkin L., Wolf P., Vitouchkine A., 2007]. Such method can be realized in the laboratory on the ground and on a spacecraft where the better accuracy in the measurements can be reached.

The basic ideas on the measuring standards in gravimetry are analyzed [L.F.Vitushkin, 2008]. It is shown that currently the primary reference measurement method of free fall acceleration is realized by the absolute ballistic gravimeter.

The successful results of the measurement of free fall acceleration using the absolute gravimeter FG5-108 with a compact frequency stabilized solid-state laser at 532 nm are presented in the paper [Vitushkin L., Orlov O., Nalivaev V., 2008].

The results of the measurement of the microseismics at the gravity stations of VNIIM at its Lomonosov branch are presented in [Krivtsov E., et al., 2008]. It is shown that besides of very quiet microseismics situation at this site a good damping is reached thanks to massive basement of 4000 tons.

The State Research Center of Russian Federation “Concern CSRI ELEKTROPRIBOR, JSC” and IAG with the support of Russian Foundation for Basic Research and Committee for Science and Higher Education of St Petersburg Government were organized two international IAG symposia “Terrestrial Gravimetry. Static and Mobile Measurements” - TGSMM-2007 and TGSMM-2010. Symposia were held in “Concern CSRI ELEKTROPRIBOR, JSC”, Saint-Petersburg.

Main topics of the symposia were devoted to techniques, methods and results of terrestrial gravity observation, including the latest achievements in absolute gravity measurements using cold atomic gravity meters.



Fig.9 TGSMM-2007 participants in the library of All-Russian D.I. Mendeleev Research Institute for Metrology.

The X-th International Geoid School ‘The Determination and Use of Geoid’ has been organized by IGeS, the State Research Center of Russian Federation “Concern CSRI ELEKTROPRIBOR, JSC” and IAG with the support of Russian Foundation for Basic Research and Committee for Science and Higher Education of St Petersburg Government in the period from 28 June to 2 July 2010 at the CSRI ELEKTROPRIBOR in St Petersburg, Russian Federation. The well known scientists took part in the school as the invited lecturers.

The school was attended by 15 participants coming from 5 countries. The computers with O.S. were provided for all the students. Each computer worked with WinXP. The FORTRAN compilers and PHYTON interface have been installed to use FORTRAN programs that usually run under Unix systems. The students have been given Lecture Notes, IGeS CD with software and data for exercises, the GRAVSOFТ manual, and a user guide for FFT exercises.

All the students received the certificates of successful graduation.

All-Russian D.I.Mendeleyev Research Institute for Metrology (Russian acronym VNIIM) proposed to organize the next International Comparison of Absolute Gravity Meters ICAG in 2017 on the reconstructed site for absolute gravity measurements in Lomonosov branch of VNIIM (Lomonosov is a little town in the vicinity of St Petersburg).

Now a new absolute ballistic gravimeter for the Primary State Standard of Russia in gravimetry as well as the document described the traceability chain for the measuring instruments in gravimetry is under development at VNIIM.

References

1. Agostino G.D’, Germak A., Vitushkin L.F. (2008), International Comparison of Absolute Gravimeters: Technical Protocol and Estimate of the Reference Value and its Uncertainty, Proceedings of International Symposium “Terrestrial Gravimetry. Static and Mobile Measurements. TGSMM-2007”, 20-23 August 2007, St Petersburg, Russia, State Research Center of Russia Electropribor, 2008, p 116.
2. Bagramiants V.O. (2010) Marine astatic gravimeters. Баграмянц В.О. Морские астазированные гравиметры / *Гравиметрия и геодезия*. — М.: Научный мир, 2010. — с. 225-236
3. Boyarsky E.A., Afanasieva L.V. (2010) MAGELLAN–2 Universal Software Package for the Processing and Analysis of Aero and Marine Gravity Measurements. *Gyroscopy and Navigation*, 2010, Vol. 1, No. 2, pp. 146–154.
4. Boyarsky E.A., Afanasieva L.V., Koneshov V.N. (2010) Method to Compute the Vertical Deflection Components. Gravity, Geoid and Earth Observation. IAG Commission 2: Gravity Field, Chania, Crete, Greece, 23–27 June 2008. Series: International Association of Geodesy Symposia , Vol. 135. Mertikas, Stelios (Ed.). 2010, XII, 538 p. N 55, pp. 421–426.
5. Brovar B.V., Gusev N.A., Yurkina M.I. (2010) On gravimetric works development in the interest of geodesy. Бровар Б.В., Гусев Н.А., Юркина М.И. О

- развитии гравиметрических работ в интересах геодезии / *Гравиметрия и геодезия*. — М.: Научный мир, 2010. — с. 472-479
6. Gusev N.A. (2010) Absolute measurements using a free fall method. Гусев Н.А. Абсолютные измерения методом свободного падения / *Гравиметрия и геодезия*. — М.: Научный мир, 2010. — с. 241-256
 7. Gusev N.A. (2010) Absolute gravity measurements using a pendulum technique. Гусев Н.А. Абсолютные измерения маятниковым методом / *Гравиметрия и геодезия*. — М.: Научный мир, 2010. — с. 178-180
 8. Gusev N.A. (2010) Relative gravity measurements using a pendulum technique on a moved and stable base. Гусев Н.А. Относительные измерения маятниковым методом на неподвижном и подвижном основании / *Гравиметрия и геодезия*. — М.: Научный мир, 2010. — с. 180-197
 9. Gusev N.A., Spiridonov N.A. (2010) Metrological providing of gravimetric works. Гусев Н.А., Спиридонов А.И. Метрологическое обеспечение гравиметрических работ / *Гравиметрия и геодезия*. — М.: Научный мир, 2010. — с. 263-267
 10. Dubovskoy V.B. (2010) Satellite gradientometry. Дубовской В.Б. Спутниковая градиентометрия / *Гравиметрия и геодезия*. — М.: Научный мир, 2010. — с. 361-363
 11. Dubovskoy V.B., Leontiev V.I., Sbitnev A.V. (2010) Modernization of GAG-3 gravity meter. Дубовской В.Б., Леонтьев В.И., Сбитнев А.В. Модернизация гравиметра ГАГ-3 / *Гравиметрия и геодезия*. — М.: Научный мир, 2010. — с. 493-495
 12. Izmailov V.P., Karagioz O.V. (2010) Gravitation constant G determination. Измайлов В.П., Карагиоз О.В. Определение гравитационной постоянной G / *Гравиметрия и геодезия*. — М.: Научный мир, 2010. — с. 82 -87
 13. Jiang Z., Becker M., Vitushkin L. (2008) The Local Gravity Field at BIPM, Proceedings of International Symposium “Terrestrial Gravimetry. Static and Mobile Measurements. TGSMM-2007”, 20-23 August 2007, St Petersburg, Russia, State Research Center of Russia Electropribor, 2008, pp 152-157.
 14. Kaftan V.I. (2010) Natural process and gravity change cycles from instrumental observation data. Кафтан В.И. Циклы природных процессов и изменений силы тяжести по данным инструментальных наблюдений / *Гравиметрия и геодезия*. — М.: Научный мир, 2010. — с. 459
 15. Kolosnitsin N.I. (2010) Equivalence principle and Earth's tides. Колосницын Н.И. Принцип эквивалентности и земные приливы / *Гравиметрия и геодезия*. — М.: Научный мир, 2010. — с. 87-95
 16. Konopikhin A.A. (2010) Sun, Moon and Venice gravity data. Конопихин А.А. Гравиметрическая изученность Луны, Марса и Венеры / *Гравиметрия и геодезия*. — М.: Научный мир, 2010. — с. 369-377
 17. Konopikhin A.A. (2010) Temporal variations of gravity field. Конопихин А.А. Временные вариации силы тяжести / *Гравиметрия и геодезия*. — М.: Научный мир, 2010. — с. 403-410

18. Копаев А.В. (2010) Tidal gravity variation: equipment, data treatment methods, interpretation. Копаев А.В. Приливные вариации силы тяжести: приборы, методы обработки данных, интерпретация / *Гравиметрия и геодезия*. — М.: Научный мир, 2010. — с. 236-241
19. Krivtsov E., Yankovsky A., Vitushkin L., Francis O. (2008) Investigations of Characteristics of Gravimetric Sites Intended for High-Accuracy Measurements, Proceedings of International Symposium “Terrestrial Gravimetry. Static and Mobile Measurements. TGSMM-2007”, 20-23 August 2007, St Petersburg, Russia, State Research Center of Russia Electropribor, 2008, pp 158-166.
20. Mazurova E.M. (2008) Corrections for ellipsoidality, Colloquium to honour Helmut Moritz on November 14, 2008 at Berlin (Germany). http://www.iag-aig.org/attach/0f5593fe0565a3e04996daad41b0c2af/IAG_Newsletter_August_2008.pdf
21. Mazurova E.M., A.S. Bagrova (2008) To a question about calculation of the height anomaly on the basis of the Wavelet-transformation and the Fast Fourier Transform to flat approximation, *Izvestiya Vuzov. Geodeziya i Aerofotos'yomka* (News of Higher schools. Geodesy and air photography), №4, 2008, pp. 6-9.
22. Mazurova E.M., Kuvkina N.A., Aleksashina E.V. (2008) On Ellipsoid Corrections// *Izvestiya Vuzov. Geodeziya i Aerofotos'yomka* (News of Higher schools. Geodesy and air photography), №5, 2008, pp. 3-5.
23. Mazurova E.M. (2009) On calculating ellipsoidal corrections to gravity disturbances (poster), *Geodesy for Planet Earth, IAG 2009 Scientific Assembly*, Buenos Aires, Argentine, August 31 to September 4, 2009. http://www.iag2009.com.ar/sessions/SESSION_2_t.pdf, p.47 (PS2-Th16).
24. Mazurova E.M., M.I. Yurkina (2010) Use of Green's function for determining the disturbing potential of an ellipsoidal Earth (poster), 2010, EGU, General Assembly, Vienna, Austria, 2-7 May. <https://administrator.copernicus.org/authentication.php>
25. Mazurova E.M. (2010) About calculation of an analytical image Hartly for a kernel of the modified Vening-Meinez's integral, In collected scientific reports of the international conference Geo-Sibir-2009, Novosibirsk, pp. 215-220.
26. Mazurova E.M., Yurkina M.I. (2010) Use of Green's function for determining the perturbing potential of an ellipsoidal Earth . *Geophysical Research Abstracts Vol. 12, EGU2010-15721*, 2010 EGU General Assembly 2010 © Author(s) 2010
27. Mazurova E.M., M.I. Yurkina (2010) Definition of Green's function for the ellipsoidal Earth, 2010, In collected scientific reports of the international conference “175 years of the higher geodetic education”, Moscow, p.79.
28. Mazurova E.M. (2010) Computation of Height Anomaly through the Fast Wavelet Transform (report), 2010, 28th IUGG Conference on Mathematical Geophysics – CMG-2010, Pisa, Italy, 7-11 June. <http://cmg2010.pi.ingv.it/Abstract/index.html>
29. Melnikov V.N. (2010) Gravitation constant. Мельников В.Н. Гравитационная постоянная / *Гравиметрия и геодезия*. — М.: Научный мир, 2010. — с. 79-82

30. Nepoklonov V.B. (2010) Automation tools and methods for initial gravimetric information preparation. Непоклонов В.Б. Средства и методы автоматизации подготовки исходной гравиметрической информации / *Гравиметрия и геодезия*. — М.: Научный мир, 2010. — с. 382-384
31. Nepoklonov V.B. (2010) Methods of anomalous Earth's gravity field simulation. Непоклонов В.Б. Методы моделирования аномального гравитационного поля Земли / *Гравиметрия и геодезия*. — М.: Научный мир, 2010. — с. 379-382
32. Nepoklonov V.B. (2010) Techniques for determination of vertical deflections and quasigeoid heights using gravimetric data. Непоклонов В.Б. Методики определения составляющих уклонений отвесных линий и высот квазигеоида по гравиметрическим данным / *Гравиметрия и геодезия*. — М.: Научный мир, 2010. — с. 384-392
33. Soloviev Yu.S. (2010) Earth's gravity field models for missile trajectory computation. Соловьев Ю.С. Модели гравитационного поля Земли для расчета траекторий полета ракет / *Гравиметрия и геодезия*. — М.: Научный мир, 2010. — с. 392-402
34. Soroka A.I. (2010) On aboard sensors of second derivatives of gravity potential. Сорока А.И. О разработках бортовых измерителей вторых производных гравитационного потенциала / *Гравиметрия и геодезия*. — М.: Научный мир, 2010. — с. 256-263
35. Taranov V.A. (2010) Earth's gravimetric data. Таранов В.А. Гравиметрическая изученность Земли / *Гравиметрия и геодезия*. — М.: Научный мир, 2010. — с. 363-369
36. Tulin V.A. (2010) Initial (before the Second World War) period of gravimeter constructing. Тулин В.А. Начальный (предвоенный) период разработки гравиметров / *Гравиметрия и геодезия*. — М.: Научный мир, 2010. — с. 197-198
37. Tulin V.A. (2010) Ring gravimeter. Тулин В.А. Кольцевой гравиметр / *Гравиметрия и геодезия*. — М.: Научный мир, 2010. — с. 198-201
38. Tulin V.A. (2010) Static gravimeters. Тулин В.А. Неастизированные гравиметры / *Гравиметрия и геодезия*. — М.: Научный мир, 2010. — с. 201-206
39. Tulin V.A. (2010) Astatic gravimeters. Тулин В.А. Астизированные гравиметры / *Гравиметрия и геодезия*. — М.: Научный мир, 2010. — с. 206-210
40. Tulin V.A. (2010) Criogenic gravimeters. Тулин В.А. Криогенные гравиметры / *Гравиметрия и геодезия*. — М.: Научный мир, 2010. — с. 210-212
41. Tulin V.A. (2010) Marine static gravimeters. Тулин В.А. Морские неастизированные гравиметры / *Гравиметрия и геодезия*. — М.: Научный мир, 2010. — с. 212-225
42. Vitushkin L.F. (2008) Measurement standards in gravimetry, Proceedings of International Symposium "Terrestrial Gravimetry. Static and Mobile

- Measurements. TGSMM-2007”, 20-23 August 2007, St Petersburg, Russia, State Research Center of Russia Electropribor, 2008, pp 98-105.
43. Vitushkin L., Jiang Z., et al, (2010) Results of the Seventh International Comparison of Absolute Gravimeters ICAG-2005 at the Bureau International des Poids et Mesures, Sevres, Gravity, Geoid and Earth Observation, IAG Symposia, vol. 135, Springer, 2010, pp 47-53.
44. Vitushkin L., Orlov O., Nalivaev V. (2008) Test Measurements of Free-Fall Acceleration Using the FG5-108 Gravimeter With a Compact Diode-Pumped Solid-State Nd:YVO4/KTP/I2 Laser at a Wavelength of 532 nm, Proceedings of International Symposium “Terrestrial Gravimetry. Static and Mobile Measurements. TGSMM-2007”, 20-23 August 2007, St Petersburg, Russia, State Research Center of Russia Electropribor, 2008, pp 143-146.
45. Vitushkin L., Wolf P., Vitouchkine A. (2007) Measurement of the gravitational constant using the attraction between two free-falling discs: a proposal", International Journal of Modern Physics D, vol. 16, n. 12, 2007, pp 1-9.
46. Yurkina M.I. (2010) Molodensky theory and its future development. Юркина М.И. Теория Молоденского и ее дальнейшее развитие / *Гравиметрия и геодезия*. — М.: Научный мир, 2010. — с. 95-120

3. Geodynamics and Earth Rotation

3.1 Geodynamics

Kaftan V.I., kaftan@geod.ru, *Central Research Institute of Geodesy, Aerial Survey and Cartography*

Steblov G. M., steblov@gps.gsras.ru, *Shmidt Institute of the Physics of the Earth RAS*

Tatevian S.K., statev@inasan.ru, *Institute of Astronomy of RAS*

Pevnev A.K., an.pevnev@yandex.ru, *Shmidt Institute of the Physics of the Earth RAS*

Nowadays a large amount of measurement information is collected in geosciences due to a great progress in technologies of observation. Space geodesy and geodynamics have collected unprecedented quantity of precise observation time series. The examples of this information can be the data of permanent GNSS, and VLBI, and gravity measurements or another geosciences observation. There are many long and high temporal resolution time series collected in modern geosciences' data bases. The large amount of the information creates conditions to find out new important regularities of the observed natural processes. This circumstance attracts many geodetic and geophysical institutes to analyze collected time series. Most of European geodetic institutes and organizations do research on the time series treatment. Some dominated periodical regularities are find in the observation and published in different scientific journals and issues. But the nature of them is not

clear for today. An example the yearly periodicities in GPS observation can be interpreted as meteorological seasonal or tidal influences or GPS radio wave propagation. Each of them can be plausible explained but every source of the influence is not determined. There are some not understudied correlations between spectra of different observed processes. An example the spectra of solar activity and Caspian Sea water level have rather close correlation but the physical reasons are not known. These unclear correlations compel researchers to continue analysis of them for the reason of finding new natural regularities or uncorrected measurement errors. In the case of geodesy it is rather important to find the causes of revealed correlations. Such kind of research will bring new information for improving measurement accuracy and physical models.

The widely used procedures of analyzing a periodical behavior in time series have some disadvantages. The first is a not differentiated estimation of statistical confidence of revealed periodical components. The practice shows that a confidence of revealed periodical components varies significantly. An example yearly and daily oscillation harmonics usually have variations changing from hours to days. Standard techniques such as FFT or close to it not provide the detailed accuracy estimations for every of the confident components. For detailed analysis it is important to know RMS for every phase, amplitude and period estimations. This circumstance does not allow users of standard methods to simulate an accurate periodical model. The next weakness of typical techniques has not enough attention to phase determination. The phase analysis is performing very seldom and in terms of angular phase values. It does not bring clear information about phase shifts of near oscillation components. Temporal values of phase shifts are very important for the interrelation analysis for different observed processes.

For this task the original technique called as Sequential Analysis of Dominated Harmonics developed several years ago was used [Kaftan V.I., 2010]. This periodicity analysis technique based on the iteration least squares method was used for mathematical modeling of different natural processes. Time series of absolute gravity measurement, polar motion determination and GPS-height measurement were processed used by the technique.

The method allows determining the trend component and the set of harmonics. The final model is a polyperiodical function that has the best fitting to the initial time series.

Two steps of computations were used: 1) estimation and removal of the trend (linear component), 2) finding one after another and removal of the high amplitude periodical components (harmonics), twice exceeded their standard errors. The proposed technique was used for forecasting of a behavior of important natural processes such as Caspian Sea level, solar cycle shape and pole coordinates. The predictions were statistically proved and demonstrated the effectiveness of the method.

Permanent GNSS measurements at sites of special geodetic networks provide high importance information for geodynamic purposes. They allow finding regularities of earth's surface movements and deformation.

The results of the permanent observation at the local GNSS network covering the San Andreas Fault were processed using the special technique of horizontal deformation computation and estimation of their uncertainty. The SOPAC archive data were used for computation of deformation characteristics from the beginning of 2004 to the end of 2007 with 10 day interval. Differences of the local network base line vectors were adjusted without any constrains. Invariant deformation characteristics and their standard errors were determined. The special ratio criterion was computed in order to determine the signal/noise information. The sample of more than hundred dispersion ratio values has shown the specific deformation intensity rise before the Parkfield earthquake occurrence. The rupture deformation and fault creep were determined rather surely as usual. The dispersion signal/noise criterion was rather low about a year before the earthquake but about four months later it begun steadily rise just to the main shock time. This specific deformation behaviour can be suggested as an evidence of a time geodetic precursor existence. In this case the situation of the earthquake forecast was quite convenient because the future rupture zone was expected about obviously and the large permanent GNSS network was specially constructed and monitored. The findings show that a strong earthquake moderate time forecast in the zones of expectation is possible.

Graphical representation of the results of Earth's movement and deformation determination are constructed by the authors of the paper [Kaftan V.I., et all, 2010]. Special video representation is recommended for long time series preliminary analysis to make easy deformation regularity research.

A few years ago the Global geodetic Observation System (GGOS) was initiated by the International Association of Geodesy and the International Union of Geodesy and Geophysics. The main task of the GGOS is the control of global changes by modern high technologies including global satellite navigation systems (GNSS) and computer techniques. For this reason the most of the modern global Earth observation results are related to the Electronic Geophysics Year themes.

The more or less spatially homogenous GNSS network was selected from the whole International Terrestrial Reference Frame (ITRF). Daily coordinate solutions were received from the Internet archive SOPAC for the interval of 1999-2005.5. Daily values of geocentric radius vectors were computed for all of 99 selected ITRF points. These data were used for the computer modeling of geometrical Earth shape behavior. The research [Kaftan V.I., Tsiba E.N., 2008, Kaftan V.I., Tsiba E.N., 2009abc] shows the interesting regularities in the performed geometric characteristic time series. The mean radius vector for the whole Earth demonstrates the rise tendency with the rate of 0.6 mm/yr. Geometrical Earth's ellipsoid semi major and semi minor axes grow both and have periodical oscillations with the amplitudes of 0.1-1.3 mm. The ratio of semi minor and semi major rise values shows the Earth's deflation decrease. The interesting feature is that the south hemisphere grows about three times faster than the north.

The results can be preliminary explained by both artificial and natural causes. The study produces the empirical data valuable for revealing some GNSS systematic errors and possible Earth's shape changes.

With a view to study variations of the geocenter movements, the sets of geocenter coordinates, estimated by the multi years sets of GPS and DORIS data processing, were analyzed. In order to estimate linear trend, amplitudes, periods and phases of geocenter variations a linear regression analysis has been applied with the use of least square method. The evaluated amplitudes of annual variations are of the order of 5-7 mm for X and Y components and 10-20 mm for Z component. Semi-annual amplitudes are also noticeable in all components. Secular trend in geocenter coordinates was found at the level of 2-3 mm.

The same time series of geocenter coordinates (X, Y, Z), have been examined with the use of so- called method of adaptive Dynamic Regression Modeling (DRM). Unlike the linear regression analyses, the DRM method envisages the further iterative, step by step, regression analyses of the non-random content of the de-trended series, obtained after first harmonics removing, aiming to avoid errors, caused by noise residuals and inter correlation between estimated harmonics and to find out the additional regularities. As a result of DRM –method the original time series is approximated by the complex mathematical model, which contains trend, periodical components and parameters of the dynamic regression model. With this model a forecasting of weekly geocenter positions has been performed. The results are discussed in papers [Tatevian S.K., Kuzin S.P., 2009, Kuzin S.P., et al., 2010, Tatevian et al., 2010].

The paper [Kogan M. G., Steblov G. M., 2008] presents the vectors of rotation of 10 major lithospheric plates, estimated from continuous GPS observations at 192 globally distributed stations; 71 stations were selected as representing stable plate regions. All days for the period 1995.0–2007.0 were included in the analysis. In contrast to previous GPS plate models, proposed model is independent of international terrestrial reference frames (ITRF). The origin of formed plate consistent reference frame is the center of plate rotation (CP) rather than the center of mass of the entire Earth's system (CM) as in recent versions of ITRF. We estimate plate rotations and CP by minimizing the misfit between the horizontal velocities predicted by the plate model and the observed GPS velocities. If any version of ITRF is used as the reference frame, the drift of the ITRF origin relative to CP cannot be neglected in estimation of plate rotation vectors and plate residual station velocities. The model of the plate kinematics presented addresses the problem debated since the beginning of the space geodesy: how big are disagreements between the current plate motions and the motions averaged over several million years? The vectors of relative plate rotations estimated in the research with the published vectors from GPS and geologic models are compared. The integrity of individual plates as exhibited by plate residual station velocities is also discussed. For seven largest plates, the RMS value of plate residual station velocities in stable plate interiors is 0.5–0.9 mm/a; this value is an upper bound on deviation of real plates from infinite stiffness.

The present tectonics of Northeast Asia has been extensively investigated during the last 12 yr by using GPS techniques. Nevertheless, crustal velocity field of the southeast of Russia near the northeastern boundaries of the hypothesized Amurian microplate has not been defined yet. The GPS data collected between 1997

February and 2009 April at sites of the regional geodynamic network were used to estimate the recent geodynamic activity of this area. The calculated GPS velocities indicate almost internal (between network sites) and external (with respect to the Eurasian tectonic plate) stability of the investigated region. Authors [Shestakov N.V., et al., 2010] have not found clear evidences of any notable present-day tectonic activity of the Central Sikhote-Alin Fault as a whole. This fault is the main tectonic unit that determines the geological structure of the investigated region. The obtained results speak in favor of the existence of a few separate blocks and a more sophisticated structure of the proposed Amurian microplate in comparison with an indivisible plate approach.

Based on different-scale deformations monitoring in the Eurasian, North American, Pacific, Amur and Okhotsk lithosphere plates' junction area the problem of study of recent geodynamics of the Far Eastern region is discussed using contemporary space geodetic methods [Bikov V.G., et al., 2009]. A feasibility of the urgent need of formation of a unified observation network for deformations monitoring and seismological observations with the Far Eastern Branch, Russian Academy of Sciences, is shown. A brief review of the GPS observation results obtained within the framework of the Integration Project between FEB RAS and SB RAS in 2006–2008 is given. It is shown that application of space geodetic data opens new opportunities for elaboration of the integral concept of the recent geodynamic activity in the East of Asia.

In 2006–2007, two great earthquakes ruptured the center of the Kuril subduction zone: first, the interplate thrust event, then the intraplate extensional event on the outer rise. The affected region was a seismic gap since 1915. Published patterns of slip differ for various seismic and tsunami inversions. The surface offsets that we measured with GPS on the Kuril Islands are sensitive to the total slip, including slow components beyond the seismic and tsunami band. The authors [Steblov G. M., et al., 2008a] invert coseismic offsets and show that the asperities, or regions of high slip, are spatially linked for both earthquakes; this pattern suggests (although does not prove) that the first event triggered the second. For the 2006 earthquake, the asperity is very shallow, probably because of the absence of an accretionary prism. For the 2007 earthquake, our modeling suggests that the rupture occurred in the bent Pacific lithosphere to a depth of 50 km.

At convergent plate boundaries, the accumulated elastic strain is released mostly in great shallow thrust earthquakes. Understanding which fraction of the elastic strain due to plate motion is released in earthquakes is important in assessing the seismogenic potential at convergent boundaries where most of great earthquakes occur. Conventionally, an estimate of the released fraction of the total elastic strain relies on the Kostrov summation of GCMT moment tensors. However, the GCMT moments of great earthquakes can be erroneous by a factor of 2 because of parameterization as a simple point source with triangular moment-rate function and because of trade-off between estimates of the moment and dip angle. Therefore, assessment of the current seismic potential caused by plate motion can be wrong. For the great 2006-2007 Kuril earthquakes, coseismic moments from inversion of GPS

offsets are larger than GCMT moments by at least a factor of 1.5. The authors [Steblov G. M., et al., 2008b] attribute this disagreement to the simplified source model used in GCMT inversion. From kinematic GPS solution, a contribution of slow coseismic slip (captured by GPS but not by seismometers) was insignificant. Earlier, a similar disagreement between geodetic and GCMT moments was demonstrated for the great 2004 Sumatra earthquake.

Research on real plates and dubious microplates existence presented in [Kogan M. G., Steblov G. M., 2008]. From the onset of plate tectonics, the existence of most of the plates was never put in doubt, although the boundaries of some plates, like Africa, were later revised. There are however, two microplates in northeast Asia, the Amurian and Okhotsk, whose existence and the sense of rotation was revised several times. The rms value of plate-residual GPS velocities is 0.5-0.9 mm/yr for sets of stations representing the motion of the following plates: Antarctic, Australian, Eurasian, North American, Nubian, Pacific, and South American. This value can be regarded as an upper bound on deviation of real plates from infinite stiffness. The rms value of plate-residual GPS velocities is 1.2-1.8 mm/yr for the Indian, Nazca, and Somalian plates. Higher rms values for India and Nazca are attributed to the noisier data. The higher rms value for Somalia appears to arise from the distributed deformation to the east of the East African Rift; whether this statement is true can only be decided from observations of denser network in the future. From the analysis of plate-residual GPS velocities, the Canadian Arctic and northeastern Siberia belong to the North American plate. The detailed GPS survey on Sakhalin Island shows that the Sea of Okhotsk region also belongs to the North American plate while the region to the west of it belongs to the Eurasian plate. These results provide a constraint on the geometry of the North American plate and put in doubt the existence of smaller plates in northeast Asia.

North American plate (NAM), was earlier hypothesized judging from seismicity [Mackey et al., 1997]. Recent analysis of GPS observations in western Alaska, on islands in the Bering Sea interior, and on the Aleutians confirmed the existence of BER rotating clockwise around the pole in east Asia [Cross and Freymueller, 2008]. However, the confirmation of BER was lacking on the western margin. Here the authors [Kogan M.G., et al., 2009] augment the data base with the GPS survey of Chukotka performed at four epochs in 2004-2009 and analyze implications of velocities in Chukotka for the motion of BER. To strengthen reference to NAM in this region remote from the interior of NAM, the authors evaluated station velocities by the method adopted in the PBO processing: in each daily solution, we combined observations in Chukotka and at 25-30 well-determined global stations over a hemisphere centered on Chukotka. The data spanning five years showed two contrasting patterns of motion of stations in Chukotka. In general, whole Chukotka slowly moves relative to NAM at a speed not exceeding 3 mm/yr. While velocities over most of the region point to ESE, velocities over northeastern Chukotka point nearly to the south agreeing with the motion of St Lawrence Island and Seward Peninsula on Alaska, located to the east of Chukotka. The change in direction of motion over Chukotka indicates existence of a right-lateral fault that agrees with

focal mechanisms of events over the seismic belt along the western margin of the Bering Sea. Movement of northeastern Chukotka confirms the sense and angular rate of rotation of BER as estimated by Cross and Freymueller from observations over the eastern part of BER. The slow motion of most of Chukotka to ESE indicates that this wedge-like extremity of NAM deforms being jammed between the Eurasian and Pacific plates, or, alternatively, it belongs to another rigid block located farther to the north.

The Kuril-Kamchatka subduction zone is the most mobile and seismically active region in Northeast Eurasia. The Kuril island arc is one of the few tectonically active regions, where until recently there had been no space geodetic network. The first GPS stations were installed on the Kamchatka Peninsula in 1997, and on the islands of the Kuril arc from Kamchatka to Hokkaido, in 2006. The collected geodetic data allowed to reveal the geometry of the interplate coupling along the whole Kuril-Kamchatka arc, and also to estimate the source parameters and their features for a number of major earthquakes in this area [G. M. Steblov, et al., 2010].

Russian and Finnish levelling networks were in 2002-2006 connected at 8 points along the Russian-Finnish boundary. We have now estimated contemporary vertical motion from joint processing of the repeated levellings in Northwest Russia and Finland. They span more than a century, and in large areas of the networks there are three campaigns. The authors [Mäkinen J., et al., 2008] compare the motion rates with velocities estimated from other measurement techniques and from geophysical models, and discuss their relationship with results from quaternary geology.

The yearly displacement velocity estimation technique for GNSS stations having the less irregular observation repetition (2-3 epochs) is proposed in [Shestakov N.V., et al., 2009]. It allows authors to reduce seasonal coordinate variation influence by taking into account apriory information parameters.

In the articles [Pevnev A.K., 2008-2010] the crisis reasons in a problem of the forecast of earthquakes are considered and the way of an exit from it is specified.

Mistake is motivated in interpreting the results of experiment targeted to checking the main position "The elastic-rebound theory of earthquakes" H.F.Reids. It is stated that American geodesists is allowed the blunder, concluding in that that they estimation of accuracy of results of measurements on undeformed base have used to measurements, run for deformed base. Exactly this and has brought them to conclusion about fallaciousness "The elastic-rebound theory of earthquakes", as was a source reason of crisis in decision of problem of forecast of earthquakes.

Natural geodynamic processes in the Earth crust become apparent as different types of movement. These movements can be regular when different strata move along fault lines on a local scale or along boundaries of tectonic plates on a continental scale. They can also be abrupt and have the form of earthquakes and other major seismic events. Both forms of movement are irreversible, and thus they can be called deformations.

Analysis of Earth crust motion and deformations can be performed by means of seismic soundings, strain-meter and tilt-meter readings, and geodetic methods which are the most significant ones. Geodesy plays a key role in crustal deformation studies

by determining the temporal variations of the Earth shape and size at various spatial and time scales. Among modern geodetic methods space geodesy applications are of most importance. Among the latter Global Positioning Systems NAVSTAR-GPS and GLONASS should be pointed out.

Current research corresponds to an overview of certain GPS applications for Earth crust motion and deformation analysis and geodynamical and geophysical solutions [Krasnoperov R. (2010)].

The research on deformation in tectonically active and seismic zones is described in the papers [Prilepin M.T., 2007, Prilepin M.T., Baranova S.M., 2007].

The results of long-term observation of crustal deformations in the Northern Caucasus using long base laser strainmeter and GNSS network are presented in the paper [Milyukov, V., et al., 2009]. An analysis of crustal strain laser interferometer records revealed a shallow magmatic chamber of Elbrus Volcano. First GNSS observation has shown the main movement velocity of 28 mm/yr in plane and uplift of the Northern Caucasus Ridge.

Within the last years Sternberg Astronomical Institute (SAI MSU) has established three new stationary GPS/GLONASS stations in the Northern Caucasus. The first (site code TRSK) is located in the Terskol International Astronomical Observatory near the Elbrus volcano, in the Kabardino-Balkaria Republic. It began to operate in 2005. The second one is located in the Solar Station of the Pulkovo Astronomical Observatory, Karachay-Cherkessia Republic (site code KISL). This station has been in operation since 2006. The third one (site code VLAD) is located in Vladikavkaz (North Ossetia). This station is created together with the North Ossetia Scientific Center. The continuous GPS measurements began in 2008. These four stationary stations (including ZECK) form the base for the regional Northern Caucasus GPS network, which can be called the Northern Caucasus Deformation Array (NCDA).

At present the repeated measurements of absolute gravity on the existing stations and the creation of the new stations are carried out by the ballistic gravity meters FG5 №110 and GABL. In 2007, after 13 years, the repeated absolute gravity measurements have been done at the stations “Zelenchukskaya” and SAI MSU”. In 2008 two new stations, “Azau” (the Glaciology station of the MSU) and «Terskol», are established. In 2009 the repeated absolute gravity measurements were carried out at the stations “Azau” and “Zelenchukskaya”. Three new stations are created in the Northern Caucasus: “Nalchik”, “Vadikavkaz” and “Ardon”. Currently, the Northern Caucasus network for repeated measurements of the absolute gravity consists of seven stations – “Zelenchukskaya”, “GAISH MSU”, “Azau”, “Terskol”, “Nalchik”, “Vadikavkaz” and “Ardon”. Repeated absolute gravity measurements were performed by joined team of SAI MSU and TsNIIGAiK.

The results of studies of local geodynamic processes in the scientific and educational base “Gornoe” of the State University of Land Use Planning are presented in the paper [Dokukin P.A., et al., 2009]. Studies were performed by the original method based on the analysis of the results of satellite geodetic measurements.

3.2 Earth's Rotation

Kaufman M.B., mark@imvp.ru, *National Research Institute of Physicotechnical and Radio Engineering Measurements of Federal Agency of Technical Regulation and Metrology*

Malkin Z.M., malkin@gao.spb.ru, *Pulkovo Observatory of RAS*

Molodenskii S.M., molodensky2008@rambler.ru, *Shmidt Institute of the Physics of the Earth RAS*

Tolchel'nikova S.A., mchubey@gao.spb.ru, *Pulkovo Observatory of RAS*

The problem of dependence of polar motion on precession-nutation model is discussed in several papers of M.I.Yurkina. It is actual since improvements in numerical, theoretical models are obtained by means of comparing spherical coordinates of points (projections of centers of bodies) – their calculated values with the observed ones. The former remains to be dependent on the motion of the Earth's axis in space and on the coordinates of the Earth's orbit. The efforts to improve the situation by means of solution of 3-body problem failed.

In answer to Euler's question "Qu'est ce que l'axe de la Terre" the author [Tolchel'nikova S.A., 2010] shows that the observed values which denote the motion of the Earth's axis in spherical coordinates (i.e. relatively to projections of stars or quasars), are related to uncertain point inside the body of the Earth.

The aim of the paper [Tolchel'nikova S.A., 2010] is to better understanding between theorists and observers in their studies of the Earth's rotation.

Russian State Time, Frequency and Earth Rotation Service provides the official EOP data and time for use in scientific, technical and metrological works in Russia. The observations of GLONASS and GPS on 30 stations in Russia, and also the Russian and worldwide observations data of VLBI (35 stations) and SLR (20 stations) are used now. To these three series of EOP the data calculated in two other Russian analysis centers are added: IAA (VLBI, GPS and SLR series) and MCC (SLR). Joint processing of these 7 series is carried out every day (the operational EOP data for the last day and the predicted values for 50 days). The EOP values are weekly refined and systematic errors of every individual series are corrected. The combined results become accessible on the VNIIFTRI server (<ftp.imvp.ru>) approximately at 6h UT daily [Kaufman M., Pasynok S., 2009].

Modern precise measuring techniques allow to define with high time resolution the Earth rotation parameters and a several of other geophysical processes (e.g. change of the angular atmospheric momentum). Authors of the paper [Kaufman M., Pasynok S., 2010] have performed an analysis of time shift between these processes in different frequency ranges. This investigation is of interest both in the theoretical plan, and in practical (e.g. for ERP prediction).

A comparison of the nutation theories IAU2000 and ERA2005 has been carried out on the efficiency of their use in a nutation angles prediction program

[Pasynok S.L., 2008]. As a result, the used prediction procedure yielded similar results for ERA2005 and IAU2000 to within the uncertainties of the measurements.

According to recommendations of the IERS Workshop on EOP Combination and Prediction (Poland, Warsaw, 2009), the improvement of the model for FCN variation is necessary, particularly to provide greater accuracy for real-time and near real-time data processing. For achievement of this purpose it is necessary to consider a problem in a broad sense as construction of model of residual divergences of the IAU2000 nutation theory and results of practical VLBI measurements. The method based on correlation estimations and a method of the least squares (LSM) has been applied for the analysis of these divergences [Pasynok S., Kaufman M., 2010]. The basic results of the carried out research are:

1) The basic components of residual divergences theoretical and measured nutation angles are allocated, their periods and amplitudes are determined;

2) In a range of the periods from 400 to 500 day Z.Malkin and N.Miller's results of 2007 regarding presence in this range of two basic harmonics have been confirmed. However, values of the periods appeared a little bit distinguished (values of the periods of 405 and 462 day, instead of 410 and 452 day accordingly are received).

3) The assumption of presence of a harmonic with the period changing in time near to 433 day does not prove to be true results of the carried out analysis. Physical interpretation of the received results is discussed.

Though pure mathematical approximations like regression models, neural networks, etc. show good results in Earth rotation forecasting, dynamical modeling remains the only base for the physically meaningful prediction. It assumes the knowledge of cause-effect relations and physical model of the rotating Earth. Excitation reconstruction from the observed EOP is critical stage, needed for comparison with known causes, such as tidal forcing, AAM, OAM changes, and uncovering unknown ones. The authors [Zotov L., Kaufman M., 2009] demonstrate different approaches, which can be used here to avoid ill-conditionality and amplification of noises and present phase studies of the model and reconstructed excitations. They can be used for excitation forecast and EOP prediction through Kalman filtering.

In the paper [Malkin Z., 2008a], the author propose to use the scatter of celestial pole offset (CPO) series obtained from VLBI observations as a measure of the accuracy of the celestial reference frame (CRF) realizations. Several scatter indices (SIs) including those proposed for the first time are investigated. The first SI is based on analysis of residuals of CPO series w.r.t. Free Core Nutation (FCN) model. The second group of SIs includes Allan deviation and its extensions, which allow one to treat unequal and multidimensional observations. Application of these criteria to several radio source catalogues showed their ability to perform a preliminary assessment of the quality of radio source catalogues, and 2D Allan deviation estimate seems to be a most sensitive measure. However, in common case, the sensitivity of tested criteria is yet not sufficient to distinguish between radio source catalogues of the highest quality. Proposed extensions of Allan deviation, weighted and

multidimensional, can be effectively used also for statistical analysis of astrogeodetic and other time series.

Results on studies which have been performed to investigate the impact of the cut-off elevation angle and elevation-dependent weighting on the EOP estimates and baseline length repeatability are presented in [Malkin Z., 2008b].

A new geometry index of Very Long Baseline Interferometry (VLBI) observing networks, the volume of network, is examined as an indicator of the errors in the Earth orientation parameters (EOP) obtained from VLBI observations [Malkin Z., 2009]. It has been shown that both EOP precision and accuracy can be well described by the power law $\sigma = aV^c$ in a wide range of the network size from domestic to global VLBI networks. In other words, as the network volume grows, the EOP errors become smaller following a power law. This should be taken into account for a proper comparison of EOP estimates obtained from different VLBI networks. Thus performing correct EOP comparison allows us to accurately investigate finer factors affecting the EOP errors. In particular, it was found that the dependence of the EOP precision and accuracy on the recording data rate can also be described by a power law. One important conclusion is that the EOP accuracy depends primarily on the network geometry and to lesser extent on other factors, such as recording mode and data rate and scheduling parameters, whereas these factors have stronger impact on the EOP precision.

During close angular approaches of solar system planets to astrometric radio sources, the apparent positions of these sources shift due to relativistic effects and, thus, these events may be used for testing the theory of general relativity; this fact was successfully demonstrated in the experiments on the measurements of radio source position shifts during the approaches of Jupiter carried out in 1988 and 2002. An analysis, performed within the frames of the present work, showed that when a source is observed near a planet's disk edge, i.e., practically in the case of occultation, the current experimental accuracy makes it possible to measure the relativistic effects for all planets. However, radio occultations are fairly rare events. At the same time, only Jupiter and Saturn provide noticeable relativistic effects approaching the radio sources at angular distances of about a few planet radii. The analysis [Malkin Z., et al., 2009] resulted in the creation of a catalog of forthcoming occultations and approaches of planets to astrometric radio sources for the time period of 2008–2050, which can be used for planning experiments on testing gravity theories and other purposes. For all events included in the catalog, the main relativistic effects are calculated both for ground-based and space (Earth–Moon) interferometer baselines.

A new method is developed for prediction of UT1 [Tissen V., et al., 2010]. The method is based on construction of a general polyharmonic model of the Earth rotation parameters variations using all the data available for the last 80-100 years, and modified autoregression technique. A rigorous comparison of UT1 predictions computed at SNIIM with the prediction computed by IERS (USNO) in 2008-2009 has shown that proposed method provides better accuracy both for ultra-short and long term predictions.

VLBI observations carried out by global networks provide the most accurate values of the precession–nutration angles determining the position of the celestial pole; as a rule, these results become available two to four weeks after the observations. Therefore, numerous applications, such as satellite navigation systems, operational determination of Universal Time, and space navigation, use predictions of the coordinates of the celestial pole. In connection with this, the accuracy of predictions of the precession–nutration angles based on observational data obtained over the last three years is analyzed for the first time, using three empiric nutation models—namely, those developed at the US Naval Observatory, the Paris Observatory, and the Pulkovo Observatory. This analysis shows that the last model has the best of accuracy in predicting the coordinates of the celestial pole. The rms error for a one-month prediction proposed by this model is below 100 microarcsecond [Malkin Z. M., 2010].

Astrometric observations of the radio source occultations by solar system bodies may be of large interest for testing gravity theories, dynamical astronomy, and planetary physics. In the paper [L'vov V., et al., 2010], authors present an updated list of the occultations of astrometric radio sources by planets expected in the nearest years. Such events, like the solar eclipses, generally speaking, can be only observed in a limited region. The map of the shadow path is provided for the events occurred in regions with several VLBI stations and hence the most interesting for radio astronomy experiments.

Investigations of the anomalies in the Earth rotation, in particular, the polar motion components, play an important role in our understanding of the processes that drive changes in the Earth's surface, interior, atmosphere, and ocean. The paper [Malkin Z., Miller N., 2010] is primarily aimed at investigation of the Chandler wobble (CW) at the whole available 163-year interval to search for the major CW amplitude and phase variations. First, the CW signal was extracted from the IERS (International Earth Rotation and Reference Systems Service) Pole coordinates time series using two digital filters: the singular spectrum analysis and Fourier transform. The CW amplitude and phase variations were examined by means of the wavelet transform and Hilbert transform. Results of the analysis have shown that, besides the well-known CW phase jump in the 1920s, two other large phase jumps have been found in the 1850s and 2000s. As in the 1920s, these phase jumps occurred contemporarily with a sharp decrease in the CW amplitude.

In the papers [Molodenskii, 2010, 2011] the ambiguity in the inverse problem of retrieval of the mechanical parameters of the Earth's shell and core from the set of data on the velocities and of longitudinal and transverse seismic body waves, the frequencies and quality factors of free oscillations, and the amplitudes and phases of forced nutation is considered. The numerical experiments show that the inverse problem of simultaneous retrieval of the density profile in the mantle–liquid core system and the mechanical quality factor of the mantle (if the total mass M and the total mean moment of inertia I of the Earth, and V_p and V_s are constant at all depths) has most unstable solutions. An example of depth distributions of density and quality factors which are alternative to the well-known PREM model is given. In these

distributions, the values of M and I and the velocities V_p and V_s at all depths for the period of oscillations $T = 1$ s exactly coincide with their counterparts yielded by PREM model ($T = 1$ s); however, the maximum deviations of the density and quality factors profiles from those in the PREM model are about 3% and 40%, respectively; the mass and the moment of inertia of the liquid core are smaller than those for the PREM model by 0.75% and 0.63%, respectively. In this model, the root mean square (rms) deviations of all the measured values of and from their values predicted by theory are half to third the corresponding values in the PREM model; the values of for natural frequencies of the fundamental tone and overtones of radial oscillations, the fundamental tones of toroidal oscillations, and the fundamental tones of spheroidal oscillations, which are measured with the highest relative accuracy, are smaller by a factor of 30, 6.6, and 2 than those in the PREM model, respectively.

Such a large ambiguity in the solution of the inverse problem indicates that the current models of the depth distribution of density have relatively low accuracy, and the models of the depth distribution of the Q - factors in the mantle are extremely unreliable.

It is shown that the ambiguity in the models of depth distribution of density considerably decreases after the new data on the amplitudes and phases of the forced nutation of the Earth are taken into account. Using the same data, one may also refine by several times the recent estimates of the creep function for the lower mantle within a wide interval of periods ranging from a second to a day.

In the papers [Zharkov V.N., Gudkova T.V., Molodenskii S.M., 2009], [Molodenskii S.M., Zharkov V.N., Gudkova T.V., 2009] the theory of forced nutation of the tri-axial planet is constructed. The results are applied to the Mars' forced nutation.

References

1. Avsiuk Yu.N., Svetlosanova Z.P. (2010) Tidal force determination correspondent to the real orbital movement of the studied body. Авсюк Ю.Н., Светлосанова З.П. Определение приливной силы, соответствующее реальному орбитальному движению исследуемого тела / Гравиметрия и геодезия. — М.: Научный мир, 2010. — с. 445-459
2. Bikov V.G., et al. (2009) The start of preparation of a unite geodynamical observation network/ Быков В.Г., Бормотов В.А., Коковкин А.А., Василенко Н.Ф., Прытков А.С., Герасименко М.Д., Шестаков Н.В., Коломиец А.Г. и др. Начало формирования единой сети геодинамических наблюдений ДВО РАН // Вестник ДВО РАН, №4, 2009, с. 83-93.
3. Chuikova N.A., Zharov V.E., Pasinik S.L., Maksimova T.G., Kazarian S.A. (2010) Kinematics and dynamics of the Earth's spheres. Чуйкова Н.А., Жаров В.Е., Пасынок С.Л., Максимова Т.Г., Казарян С.А. Кинематика и динамика оболочек Земли / Гравиметрия и геодезия. — М.: Научный мир, 2010. — с. 410-445

4. Dokukin P.A., Alekseeva P.A., Zmizgov A.A. (2009) Geodynamic process study using GNSS measurements in local geodetic network. Докукин П.А., Алексеева Е.В., Змызгов А.А. Исследование геодинимических процессов по спутниковым измерениям в локальной геодезической сети // Землеустройство, кадастр и мониторинг земель. – 2009. - №12. 63-71 с.
5. Dokukin P.A., Kaftan V.I. (2008) Deformation geodetic precursor of the Parkfield 2004 earthquake / WEGENER 2008 - 14th General Assembly of Wegener. Programme and Book of Abstracts September 15-18, 2008, Darmstadt, Germany.- p.89
6. Dokukin P.A., Kaftan V.I., Krasnoperov R.V. (2008) Influence of GNSS network triangle shape on the accuracy of deformation determination. Докукин П.А., Кафтан В.И., Красноперов Р.В. Влияние формы треугольников СРНС сети на определение деформаций земной поверхности // Известия ВУЗов. Геодезия и аэросъемка. – 2010. - №5 – с.6-11
7. Galaganov O.N. (2010) GPS technologies for deformation monitoring of geodynamic process. Галаганов О.Н. GPS-технологии для деформационного мониторинга геодинимических процессов / Гравиметрия и геодезия. — М.: Научный мир, 2010. — с. 316-327
8. Kaftan V.I. (2010) Cycles of natural processes and gravity changes from instrumental observation data. Кафтан В.И. Циклы природных процессов и изменений силы тяжести по данным инструментальных наблюдений/ Гравиметрия и геодезия.- М.: Научный мир, 2010.- с.459-470
9. Kaftan V.I., Krasnoperov R.I., Yurovsky P.P. Graphical representation of the results of Earth's movements and deformation determination using global navigation satellite systems. Кафтан В.И., Красноперов Р.И., Юровский П.П. Графическое представление результатов определения движений и деформаций земной поверхности средствами глобальных навигационных спутниковых систем// Геодезия и картография.- 2010.- №11.- с.2-7
10. Kaftan V.I., Tsiba E.N. (2008) Estimation of changes of mean radius-vector of global geodetic network sites. Кафтан В.И., Цыба Е.Н. Оценка изменений среднего радиус-вектора пунктов глобальной геодезической сети // Геодезия и картография.- 2008.- №10.- с.14-21
11. Kaftan V.I., Tsiba E.N. (2009) Geometric ellipsoid semi-axes change estimation from results of GPS observation in global geodetic network. Кафтан В.И., Цыба Е.Н. Оценка изменений полуосей земного геометрического эллипсоида по результатам спутниковых наблюдений в глобальной геодезической сети// Изв. ВУЗов. Геодезия и аэрофотосъемка.- 2009.-№1.-с. 33-40
12. Kaftan V., Tsiba E. (2009) Global reference frame coordinate variation as indicators of global changes and geodetic observation quality / International Conference “Electronic Geophysical Year: State of the Art and Results”, Materials of the Conference/ 3-6 June 2009. Pereslavl-Zalessky, Russia .- p.29
13. Kaftan V.I., Tsiba E.N. (2009) Changes of point coordinates of international geodetic network as indicator of global process and reference frame quality. Кафтан В.И., Цыба Е.Н. Изменения координат пунктов международной

- геодезической сети, как индикатор глобальных процессов и качества координатной основы / Сборник статей по итогам международной научно-технической конференции, посвященной 230-летию основания МИИГАиК.- Выпуск 2. В 2-х частях.- Ч.II.- М.:Изд-во МИИГАиК, 2009.- с.80-82
14. Kaufman M., Pasynok S. (2009) Russian state Time and Earth rotation Service: observations, EOP series, prediction. IERS Workshop on EOP Combination and Prediction. 19 – 21 October 2009. Warsaw (Poland). P 22.
 15. Kaufman M., Pasynok S. (2010) Investigation of time shifts between ERP and some geophysical processes. Joint GGOS/IAU Science Workshop “Observing and Understanding Earth Rotation”, Shanghai, China, October 25-28, 2010, P.40.
 16. Kogan M.G., Frolov D.I., Steblov G.M., Gabsatarov Y.V., Vladimirova I.S., Freymueller J.T. (2009) Imprint of the Bering Plate in Chukotka, East Siberia, from Regional GPS Observations // Eos Trans. AGU, Fall Meet. Suppl., 2009, V.90. N.52, Abstract G23D-04.
 17. Kogan M. G., Steblov G. M. (2008) Real plates and dubious microplates // Eos Trans. AGU, Fall Meet. Suppl., 2008. V.89. N.53. Abstract G21A-0653.
 18. Kogan M. G., Steblov G. M. (2008) Current global plate kinematics from GPS (1995–2007) with the plate-consistent reference frame // J. Geophys. Res., 2008. V.113, B04416. DOI:10.1029/2007JB005353.
 19. Krasnoperov R. (2009). Earth crust motion and deformation analysis based on space geodesy methods, Russ. J. Earth. Sci., 11, ES1002, doi:10.2205/2009ES000394.
 20. Kuzin S.P., Tatevian S.K., Valeev S.G., Fashutdinova V.A. (2010) Studies of the geocenter movements by 16-year DORIS data. Advances of Space Research 2010
 21. Kuznetsov Yu.G. (2010) Recent vertical crustal movement study. Кузнецов Ю.Г. Изучение современных вертикальных движений земной поверхности / Гравиметрия и геодезия. — М.: Научный мир, 2010. — с. 299-302
 22. L'vov V., Malkin Z., Tsekmeister S. (2010) Forthcoming Occultations of Astrometric Radio Sources by Planets. In: D. Behrend, K. D. Baver (Eds.), IVS 2010 General Meeting Proc., NASA/CP-2010-215864, 2010, 320-324.
 23. Mäkinen J., Kaftan V.I., Demiyarov G.V., Kuznetsov Yu.G., Zabnev V.I., Lehmuskoski P., Saaranen V., Poutanen M., Takalo M. (2008) Crustal uplift in eastern Fennoscandia: Results from repeated Russian and Finnish levellings / EGU General Assembly, Vienna, April 13–18, 2008
 24. Malkin Z. M. (2010) Analysis of the Accuracy of Prediction of the Celestial Pole Motion. Astronomy Reports, 2010, v. 54, No. 11, 1053-1061. DOI: 10.1134/S1063772910110119
 25. Malkin Z. M. (2007) Empiric Models of the Earth's Free Core Nutation. Solar System Research, 2007, v. 41, No. 6, 492-497. DOI: 10.1134/S0038094607060044
 26. Malkin Z. (2010) CPO Prediction: Accuracy Assessment and Impact on UT1 Intensive Results. In: D. Behrend, K. D. Baver (Eds.), IVS 2010 General Meeting Proc., Milkov D. A., Karimova L., Malkin Z. M. (2009) Non-linear vector ANN

- predictor for Earth rotation parameters forecast. In: Proc. Journees 2008: Astrometry, Geodynamics and Astronomical Reference Systems, Dresden, Germany, 22-24 Sep 2008, Ed. M. Soffel, N. Capitaine, 2009, 139-140. NASA/CP-2010-215864, 2010, 261-265.
27. Malkin Z. (2008b) Influence of Elevation-Dependent Weighting on Parameter Estimates: A Case of CONT05. In: Measuring the Future, Proc. Fifth IVS General Meeting, A. Finkelstein, D. Behrend (Eds.), 2008, 178-182.
 28. Malkin Z. (2009) On comparison of the Earth orientation parameters obtained from different VLBI networks and observing programs. *J. of Geodesy*, 2009, v. 83, No. 6, 547-556. DOI: 10.1007/s00190-008-0265-2
 29. Malkin Z. (2008) On Construction of ICRF-2. In: Measuring the Future, Proc. Fifth IVS General Meeting, A. Finkelstein, D. Behrend (Eds.), 2008, 256-260.
 30. Malkin Z. (2008a) On the accuracy assessment of celestial reference frame realizations. *J. of Geodesy*, 2008, v. 82, No. 6, 325-329. DOI: 10.1007/s00190-007-0181-x
 31. Malkin Z. M., L'vov V. N., Tsekmejster S. D. (2009) Forthcoming Close Angular Approaches of Planets to Radio Sources and Possibilities to Use Them as GR Tests. *Solar System Research*, 2009, v. 43, No. 4, 313-318. DOI: 10.1134/S0038094609040054
 32. Malkin Z., Miller N. (2010) Chandler wobble: two more large phase jumps revealed. *Earth Planets Space*, 2010, v. 62, No. 12, 943-947. doi:10.5047/eps.2010.11.002
 33. Malkin Z., Popova E. (2009) An analysis of source motions derived from position time series. In: Proc. Journees 2008: Astrometry, Geodynamics and Astronomical Reference Systems, Dresden, Germany, 22-24 Sep 2008, Ed. M. Soffel, N. Capitaine, 2009, 239-240.
 34. Malkin Z., Titov O. (2008) Optical Characteristics of Astrometric Radio Sources. In: Measuring the Future, Proc. Fifth IVS General Meeting, A. Finkelstein, D. Behrend (Eds.), 2008, 183-187.
 35. Medvedev P.P, Nepoklonov V.B., Lebedev S.A., Zueva A.N., Pleshakov D.I., Rodkin M.V. (2010) Satellite altimetry. Медведев П.П., Непоклонов В.Б., Лебедев С.А., Зуева А.Н., Плешаков Д.И., Родкин М.В. Спутниковая альтиметрия / Гравиметрия и геодезия. — М.: Научный мир, 2010. — с. 340-359
 36. Milyukov, V., et al. (2009) Monitoring crustal deformations in the Northern Caucasus using a high precision long base laser strainmeter and the GPS/GLONASS network. *J. Geodyn.*(2009), doi:10.1016/j.jog.2009.10.003
 37. Molodenskii, S.M. (2010). Correctives to the Scheme of the Earth's Structure Inferred from New Data on Nutation, Tides, and Natural Oscillations, *Physics of the Solid Earth*, vol. 46, no. 7, pp. 555–579. Молоденский С.М. Коррективы в схему строения Земли по новым данным о приливах, нутации и собственных колебаниях// *Физика Земли*. - 2010.-№7.-с. 3–28
 38. Molodenskii, S.M. (2011). Models of Density and Mechanical Q Factor Distributions according to New Data on the Nutations and Free Oscillations of the

- Earth: 1. Ambiguity in the Inverse Problem. *Izvestiya, Physics of the Solid Earth*, 2011, Vol. 47, No. 4, pp. 263–275. . Молоденский С.М. Модели распределений плотности и параметров добротности мантии по новым данным о нутации и собственных колебаниях. 1. Неоднозначность решения обратной задачи// *Физика Земли*. - 2011.-№4.-с. 3–15
39. Molodenskii S.M., Zharkov V.N., Gudkova T.V. (2009) On models of Mars' interior and amplitudes of forced nutations. 1. The effects of liquid core and mantle elasticity. *Physics of the Earth and Planetary Interiors*, 172, p.335-344.
40. Pasynok S.L. (2008) Comparison of the Prediction Force of the Nutation Theories IAU2000 and ERA2005. The 5-th General Meeting of the International VLBI Service for Geodesy and Astrometry "MEASURING THE FUTURE". St. Petersburg, 2008, Russia, p. 51
41. Pasynok S., Kaufman M. (2010) The model of the disagreements between IAU2000 nutation theory and observations. Joint GGOS/IAU Science Workshop "Observing and Understanding Earth Rotation", Shanghai, China, October 25-28, 2010, p.28
42. Pevnev A.K. (2008) On the necessity of a rational combination of direct and inversion methods the earthquake forecast problem solving. Певнев А.К. О необходимости рационального сочетания методов прямых и обратных задач в решении проблемы прогноза землетрясений. *Геофизика XXI столетия: 2007 год*. М.:. 2008. С.139-146.
43. Pevnev A.K. (2008) What is preventing to solve the earthquake forecast problem. Певнев А.К. Что мешает решить проблему прогноза землетрясений // *Геоинжиниринг*. 2008. №1 (5). С.68-79.
44. Pevnev A.K. (2009) On the way to the real earthquake forecast. Певнев А.К. О пути к реальному прогнозу землетрясений // *Уч.зап. РГГМУ*, 2009. №11, с.132-153.
45. Pevnev A.K. (2009) On the reasons of the crisis of the earthquake forecast problem and ways to come out from it. Певнев А.К. О причинах кризиса в проблеме прогноза землетрясений и путях выхода из него / *Актуальные проблемы региональной геологии и геодинамики. XI Горшковские чтения. Материалы конференции*. МГУ, 24 апреля 2009. URSS. Москва. 2009, с. 8-16.
46. Pevnev A.K. (2010) On mistake of American geodesists which initiate the problem of the earthquake forecast. Певнев А.К. Об ошибке американских геодезистов, положившей начало кризису в проблеме прогноза землетрясений// *Изв. Государственного университета по землеустройству*. 2010, №12
47. Pevnev A.K. (2010) On the initial reason of the earthquake problem crisis. Певнев А.К. О исходной причине кризиса в прогнозе землетрясений// *Уч.зап. Российского государственного гидрометеорологического университета*. 2010. №11.
48. Prilepin M.T. (2007) Study on balances of local and regional deformations in tectonically active Earth's crust zones. М.Т.Прилепин. Изучение соотношений локальных и региональных деформаций в тектонически активных областях земной коры // *Тезисы доклада на Научной сессии Международной*

- ассоциации геодезии. Генеральная ассамблея Союза геодезии и геофизики. Перуджа, Италия 2007 г.
48. Prilepin M.T., Baranova S.M. (2007) Deformation processes in the Izmit 1999 earthquake preparation interval. М.Т.Прилепин, С.М.Баранова. Деформационные процессы в период подготовки Измитского землетрясения 1999 г. // Геофизические исследования. 2007, вып. 7. ИФЗ РАН
 49. Shestakov N.V., et al. (2009) Seasonal GNSS coordinate variation account in recent crustal movement research. Шестаков Н.В., Герасимов Г.Н., Герасименко М.Д. Учет сезонных вариаций координат пунктов GPS/ГЛОНАСС-наблюдений при исследовании современных движений земной коры // Геодезия и картография, № 9, 2009, с. 46-51.
 50. Shestakov N.V., M. D. Gerasimenko, H. Takahashi, M. Kasahara, V. A. Bormotov, V. G. Bykov, A. G. Kolomiets, G. N. Gerasimov, N. F. Vasilenko, A. S. Prytkov, V. Yu. Timofeev, D. G. Ardyukov and T. Kato. Present tectonics of the southeast of Russia as seen from GPS observations // Geophysical Journal International, 2010, doi: 10.1111/j.1365-246X.2010.04871.x.
 51. Sokolova Ju., Malkin Z. (2008) Comparison and Combination of CRF Catalogues. In: Measuring the Future, Proc. Fifth IVS General Meeting, A. Finkelstein, D. Behrend (Eds.), 2008, 275-278.
 52. Sokolova Ju., Malkin Z. (2007) On comparison and combination of catalogues of radio source positions. Astron. Astrophys., 2007, v. 474, No. 2, 665-670. DOI: 10.1051/0004-6361:20077450
 53. Steblov G. M., Kogan M. G., Levin B. V., Vasilenko N. F., Prytkov A. S., Frolov D. I. (2008) Spatially linked asperities of the 2006–2007 great Kuril earthquakes revealed by GPS // Geophys. Res. Lett., 2008. V.35, L22306. DOI:10.1029/2008GL035572.
 54. Steblov G. M., Kogan M. G., Levin B. V., Vasilenko N. F., Prytkov A. S., Frolov D. I. Elastic strain released in earthquakes at convergent plate boundaries. // Eos Trans. (2008) AGU, Fall Meet. Suppl., 2008. V.89. N.53. Abstract G21A-0654.
 55. Steblov G. M., et al. (2010) Dynamics of the Kuril-Kamchatka Subduction Zone from GPS Data. Стеблов Г.М., Василенко Н.Ф., Прытков А.С., Фролов Д.И., Грекова Т.А. Динамика Курило-Камчатской зоны субдукции по данным GPS // Физика Земли, 2010. №5. С.77-82.
 56. Steblov G. M., N. F. Vasilenko, A. S. Prytkov, D. I. Frolov, T. A. Grekova (2010). Dynamics of the Kuril-Kamchatka Subduction Zone from GPS Data // Izvestiya, Physics of the Solid Earth, 2010, Vol. 46, No. 5, pp. 440–445. (Original Russian Text: G.M. Steblov, N.F. Vasilenko, A.S. Prytkov, D.I. Frolov, T.A. Grekova, 2010, published in Fizika Zemli, 2010, No. 5, pp. 77–82.)
 57. Tatevian S.K., Kuzin S.P. (2009) Studies of the Earth's center of mass periodical movements // Russian Journal of Earth Sciences, Vol. 11, ES2003, doi: 10.2205/2009ES000361, 2009.

58. Tatevian S., Kuzin S, Valeev S. (2010) Geocenter estimation from 16-years data of the DORIS system. *Advances in Space Research (COSPAR)*, 46, (2010) p.1292-1298.
59. Tissen V., Tolstikov A., Malkin Z. (2010) UT1 prediction based on long-time series analysis. *Artificial Satellites*, 2010, v. 45, No. 2, 111-118. DOI: 10.2478/v10018-010-0012-9
60. Titov O., Malkin Z. (2009) Effect of asymmetry of the radio source distribution on the apparent proper motion kinematic analysis. *Astron. Astrophys.*, 2009, v. 506, No. 3, 1477-1485. DOI: 10.1051/0004-6361/200912369
61. Tolchel'nikova S.A. (2010) On Studies of Precession and Nutation of the Earth in Theory and from Observations. С.А.Толчельникова. Об изучении прецессионно-нутационного вращения Земли в теории и по наблюдениям // *Геодезия и картография* , 2010, №5, с.3-11
62. Zotov L., Kaufman M. (2009) Dynamical modeling as fundamental of Earth rotation prediction. *IERS Workshoch on EOP Combination and Prediction*. 19 – 21 October 2009. Warsaw (Poland). P 28.
63. Yurkina M.I. (2010) On the connection between terrestrial and celestial coordinate systems. Юркина М.И. О связи земной и небесной системы координат / *Гравиметрия и геодезия*. — М.: Научный мир, 2010. — с. 54-56
64. Zharkov V.N., Gudkova T.V., Molodenskii S.M. (2009) On models of Mars' interior and amplitudes of forced nutations. 1. The effects of deformation of Mars from its equilibrium state on the flattening of the core-mantle flattening. *Physics of the Earth and Planetary Interiors*, 172, p.324-333

4. Positioning and Applications

Kaftan V.I., kaftan@geod.ru, *Central Research Institute of Geodesy, Aerial Survey and Cartography*

Results of the research on satellite laser range distance errors and techniques are presented in the papers [Prilepin M.T., et al., 2008, 2009].

Research on geodetic measurements and monitoring of large bridge construction using modern GNSS and electronic technologies carried out by the authors of publications [Brin' M.Ya., et al., 2007, 2009, Nikitchin A.A., 2009, Sergeev O.P., et al., 2008].

Laser scanning techniques are widely used in engineer application of geodesy. Some theoretical and practical researches are presented in the papers [Kanashin N.V., Kougiya V.A., 2007, 2009].

Series of works devoted to a designee of modern gravimetric equipment and techniques are presented in publications listed below.

The article [Churilov I.D., Dokukin P.A., 2010] describes an operational experience of the use of positioning system at pipeline inspection in the South China

Sea with used ROV (Remotely Operated Vehicle). The description of the used positioning method, devices and software is presented.

Results of the study of an influence of discrete digital device electronic total stations on the accuracy of observation results of point sources of emission are described in the paper [Baranov V.N., Bragin A.A., 2009].

References

1. Baranov V.N., Bragin A.A. (2009) On the problem on an influence of CCD-structure discreteness on the observation results in point emission sources observation. Баранов В.Н., Брагин А.А. К вопросу о влиянии дискретности ПЗС структур на точность результатов при наблюдениях точечных источников излучения // Землеустройство и кадастр недвижимости в реализации государственной земельной политика и охраны окружающей среды. Сборник научных статей международной научно практической конференции, посвященной 230-летию Государственного университета по землеустройству. – М.: ГУЗ, 2009. – с.384-388
2. Baranov V.N., Tsurikov A.A. (2009) Research on anomalous gravity statistical parameters in the Protvino area of the ring particle accelerator construction (2009) Баранов В.Н., Цуриков А.А. Исследование статистических характеристик аномального гравитационного поля в районе строительства УНК (г. Протвино) // Землеустройство, кадастр и мониторинг земель. – М., 2009
3. Batrakov Yu.G. (2010) Initial azimuth error influence on the accuracy of geodetic traverses. Батраков Ю.Г. Влияние погрешностей исходных дирекционных углов на точность полигонометрических ходов // Известия вузов. Геодезия и картография – 2010 - №6 – с. 8
4. Brin' M.Ya., et al. (2009) On electronic tacheometer choice for geodetic support of high building construction. М.Я. Брынь, Е.Г. Толстов, А.А. Никитчин и др. О выборе электронного тахеометра для геодезического сопровождения строительства высотных сооружений // Новітні досягнення геодезії, геоінформатики та землевпорядкування – Європейський досвід: Зб. наук. пр. – Чернігів, 2009. – вип.5. – С. 60-63.
5. Batrakov Yu.G., Kashirkin Yu.Yu. (2009) Land management using GNSS. Батраков Ю.Г., Каширкин Ю.Ю. Межевание земель с применением GPS-ГЛОНАСС приемника // Геодезия и картография. М.: №6, 2009. – 4 стр.
6. Brin' M.Ya., et al. (2009) On geodetic network monitoring during shroud bridge construction. М.Я. Брынь, А.А. Никитчин, О.П. Сергеев и др. О мониторинге геодезической сети в ходе строительства вантовых мостов // Сучасні досягнення геодезичної науки та виробництва: Зб. наук. пр. – Львів, 2009. – вып.1(17). – С.98–102.
7. Brin' M.Ya., et al. (2009) Geodetic deformation monitoring of shroud bridge on the base of satellite technologies. М.Я. Брынь, А.А. Никитчин, Е.Г. Толстов и др. Геодезический мониторинг деформаций вантовых мостов на основе

- спутниковых технологий. // Изв. Петербургского гос. ун-та путей сообщения. – 2009. – №2(19). – С. 120-128
8. Brin' M.Ya., Veselkin P.A., Nikitchin A.A. (2007) Satellite and terrestrial measurement adjustment using parametric method for bridge laying out networks. М.Я. Брынъ, П.А. Веселкин, А.А. Никитчин и др. Уравнивание спутниковых и наземных измерений параметрическим способом в плоских координатах для построения мостовых разбивочных сетей // Изв. Петербургского гос. ун-та путей сообщения. – 2007. – №1(10). – С. 135-140.
 9. Brovar B.V. (2010) Determination of gravitation acceleration force, orientation and coordinate of mobile object using the cascade method. Бровар Б.В. Определение вектора ускорения силы притяжения, ориентации и координат движущегося объекта каскадным методом / *Гравиметрия и геодезия*. — М.: Научный мир, 2010. — с. 489-493
 10. Chetverikova A.A. (2009) Experience of the usage of borehole inclinometer and engineering perspectives. Четверикова А.А. Опыт работы со скважинным инклинометром и перспективы его применения в строительства // Известия ВУЗов: Геодезия и аэрофотосъемка. М., 2009. - №1
 11. Churilov I.D., Dokukin P.A. (2010) Experience of works with the positioning system during pipe line inspection in the South China Sea. Чурилов И.Д., Докукин П.А. Опыт работы с системой позиционирования при обследовании подводного трубопровода в Южно-Китайском море // Землеустройство, кадастр и мониторинг земель. – 2010. - №3. – с. 86-89
 12. Drozdov N.D. (2009) On astro-gravimetric autonomous positioning. Дроздов Н.Д. Об астрогравиметрическом автономном позиционировании // Известия ВУЗов: Геодезия и аэрофотосъемка. М., 2009. - №2
 13. Dubovskoy V.B., Zhilnikov V.G., Leontiev V.I., Sbitnev A.V. (2010) Microlevel NI-3. Дубовской В.Б., Жильников В.Г., Леонтьев В.И., Сбитнев А.В. Микронивелир НИ–3 / *Гравиметрия и геодезия*. — М.: Научный мир, 2010. — с. 495-497
 14. Dubovskoy V.B., Leontiev V.I., Latishev D.D., Sbitnev A.V., Chetverikova A.A., (2010) Borehole inclinometer NI-2. Дубовской В.Б., Леонтьев В.И., Латышев Д.Д., Сбитнев А.В., Четверикова А.А. Скважинный инклинометр НИ–2 / *Гравиметрия и геодезия*. — М.: Научный мир, 2010. —с. 497-500
 15. Kanashin N.V., Kougiya V.A. (2007) Research on the accuracy of joining up point coordinates received by terrestrial laser scanning. Канашин Н.В., Коугия В.А. Исследование точности объединения облаков точек, полученных по данным наземного лазерного сканирования // Сучасні досягнення геодезичної науки та виробництва: Зб. наук. пр. – Львів 2007. – вып.1 (13). С. 87 – 92.
 16. Kanashin N.V., (2009) Research on data treatment technique of scanner measurements. Канашин Н.В. Исследование способов математической обработки сканерных измерений // Известия Петербургского университета путей сообщения, вып. 2 (19), 2009. – С. 168 – 177

17. Kuznetsov A.I. (2009) Landslide processes simulation using geodetic observation at Kolomenskoe Park territory of Moscow. Кузнецов А.И. Моделирование оползневых процессов по данным геодезических наблюдений на территории Коломенского парка города Москвы // Проблемы землеустройства и кадастра недвижимости в реализации государственной земельной политики и охраны окружающей среды. Материалы научно-практической конференции (ГУЗ, 27 мая 2009 г.). – ГУЗ. – М., 2009. – с.160-167
18. Lupovka V.A., Bragin A.A. (2010) Precise astronomical azimuth determination on F.N.Krasovsky method. Луповка В.А., Брагин А.А. Определение точного астрономического азимута по способу Ф.Н. Красовского // Известия ВУЗов. Геодезия и аэрофотосъемка – 2010 - №2 – С. 42-50
19. Mazurova E.M., Ogienko S.A. (2010) The processing of geodetic data of the program ArcGis. In collected scientific reports of the international conference “175 years of the higher geodetic education”, Moscow, pp.78-79.
20. Nepoklonov V.B. (2010) Applied task requirements to geodetic and gravimetric data. Непоклонов В.Б. Требования прикладных задач к геодезическим и гравиметрическим данным / *Гравиметрия и геодезия*. — М.: Научный мир, 2010. — с. 377-379
21. Neumivakin Yu.K., Nikiforov M.V., Retiunskikh A.S. (2009) Technological aspects of laser scanning. Неумывакин Ю.К., Никифоров М.В., Ретюнских А.С. Технологические аспекты лазерного сканирования // Землеустройство и кадастр недвижимости в реализации государственной земельной политика и охраны окружающей среды. Сборник научных статей международной научно практической конференции, посвященной 230-летию Государственного университета по землеустройству. – М.: ГУЗ, 2009. – с.389-393.
22. Nikitchin A.A. (2009) On improving of the technique of satellite geodetic measurement analysis and interpretation in bridge monitoring systems. Никитчин А.А. О совершенствовании методики анализа и интерпретации спутниковых геодезических измерений в системах мониторинга вантовых мостов // Геодезия и картография. – 2009. – №4. – С. 34–36.
23. Prilepin M.T., Andreev V.Yu., Grigorievsky V.I., Sadovnikov V.P. (2009) М.Т.Прилепин, В.Ю.Андреев, В.И.Григорьевский, В.П.Садовников. Distance measurement errors using laser satellite rangers, dependent on atmosphere refraction characteristics in a presence of phase heterogeneity in a laser bunch. Погрешности измерения расстояний лазерными спутниковыми дальномерами, обусловленные рефракционными свойствами атмосферы при наличии фазовой неоднородности в пучке лазера. // *Радиотехника и Электроника*, 2009, т. 54, п.1.
24. Prilepin M.T., Grigorievsky V.I., Sadovnikov V.P. (2008) М.Т.Прилепин, В.И.Григорьевский, В.П.Садовников. Subpicosecond laser usage for long distance measurements in atmosphere between geodetic points. Применение субпикосекундных лазеров для измерения больших расстояний в атмосфере между геодезическими пунктами. // *Приборы и Системы. Управление, Контроль, Диагностика*. 2008, №12.

25. Sergeev O.P., Malkovsky O.N., Nikitchin A.A. (2008) Geodetic work for the Large Obukhov Bridge constructing. О.П. Сергеев, О.Н. Малковский, А.А. Никитчин и др. Геодезические работы при строительстве Большого Обуховского моста в Санкт-Петербурге // Транспортное строительство. – 2008. – №7. – С. 48–52.
26. Determination of angle of slop of the Borisogleb Monastery – Russian architecture heritage. Симонян В.В., Кузнецов А.И. Определение кренов стен Борисоглебского монастыря - памятника древнерусской архитектуры // Землеустройство, кадастр и мониторинг земель. – М., 2010 - №19. – с.97-100
27. Vasin M.G., Popkov D.I. (2010) On aboard gravity gradientometry tasks. Васин М.Г., Попков Д.И. О задачах бортовой гравитационной градиентометрии / *Гравиметрия и геодезия*. — М.: Научный мир, 2010. — с. 479-489

5. Theory and Computation

Gerasimenko M.D., mdger@iam.dvo.ru, *Institute of Applied Mathematics of the Far East Division of RAS*

Neyman Yu.M., yuney@miigaik.ru, *Moscow State University of Geodesy and Cartography*

Tolchel'nikova S.A., mchubey@gao.spb.ru, *Pulkovo Observatory of RAS*

Shestakov N.V., nikon@phys.dvfu.ru, *Far Eastern Federal University*

The relations between geodesy and gravimetry are discussed in the monograph [Gravimetry and Geodesy, 2010, 570 p. In Russian] which is dedicated to the 90th birthday of Vsevolod V. Brovar, an outstanding Russian scientist in the domain of geodetic gravimetry and geodesy, and to the centenary of Mikhail S. Molodensky, a Russian geodesist and geophysicist, the founder of the contemporary Earth figure theory, who made geodesy free from hypotheses of the Earth internal structure and has transformed geodesy into an exact science.

The purpose of the book is to show fruitful interacted influences of gravimetry and geodesy, evolutions of their goals and tasks; to sum up the main theoretical, experimental and production work done at the verge of the 2nd and 3rd millennia in the field of geodetic gravimetry (or physical geodesy), the transition from particular to system solutions of geodesy and gravimetry problems; to show the prospects for gravimetry development in the interests of geodesy.

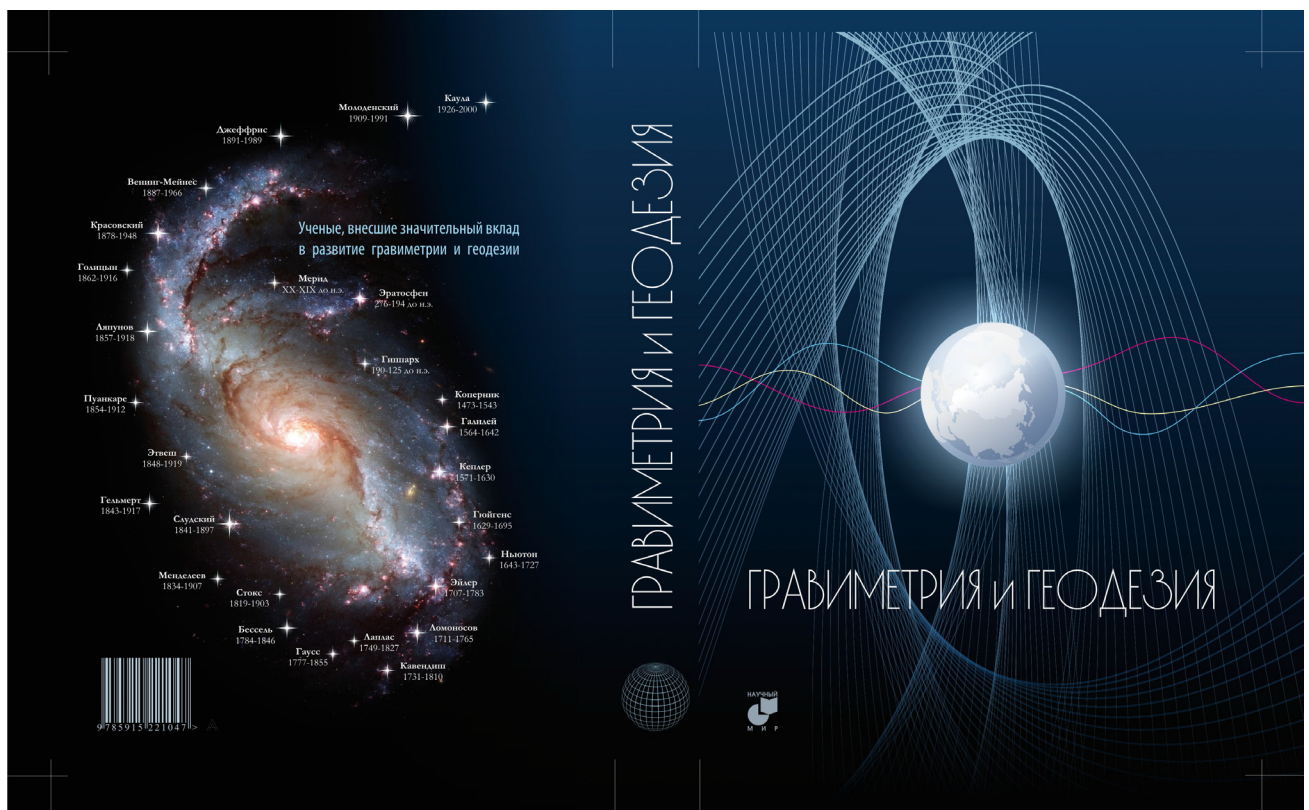


Fig. 10 Covering of the book “Gravimetry and Geodesy”

The book is intended for the attention of geodesists, gravimetrists, astronomers, geophysicists, builders, navigators, ballisticians, designers, organizers of science and of all those who are interested in the development of geodesy and gravimetry [Gravimetry and Geodesy, 2010].

The determination of the motions of the Earth's pole and the places of observations in XX century is reviewed in the paper [Tolchel'nikova S.A., 2010]. Information is given about the history of the spherical coordinate systems used by different International services monitoring the Earth rotation.

The principal possibility is shown to connect the mean coordinates of reference objects (stars, quasars) to the constant coordinates- λ , φ - of the one equatorial observatory which permits to exclude the usage of numerical (theoretical) models for precession and nutation to the obtained long periodic and secular motions under discussion. At the first step projections of mean polar places to the celestial sphere are considered.

In [Tolchel'nikova S.A., 2008] the transition is considered from studies of the motions of projections of objects in spherical coordinate systems to those of bodies in triads. The views of E.Mach and A.Einstein admitting only relative motion are not heuristic. As an example, the SRT formulae for stellar aberration are shown to be not adequate for the great velocity of an observer. Instead of their "improvement" using GRT corrections for space curvature, it is necessary to take into account the curvature of celestial sphere (a surface) in the case when the velocity of observer is not less than $0.01c$ and/or when the error of observation is less than 0.5ms of arc. For the latter case the formulae of stellar aberration were derived in *Izvestija GAO (Pulkovo)* № 213, 1998 and № 214, 2000.

In [Tolchel'nikova S.A., 2009] two periods are considered in the development of astronomy and geodesy which have been a single science, and were divided into two close cooperating departments in XIX century. After technical rearmament in both branches of science and the latest "revolution in astrometry" the differentiation in the two fields of activity has increased. Under discussion is the newest terminology, frequent changes in theoretical models implemented by IERS and reverberated in IAU Resolutions, the influence of cardinal changes in methods of establishing reference systems ICRF and ICRS on the studies of long periodic and secular problems in Earth's rotation. The attention is paid to the actual idea of establishing International Earth's Coordinate System advanced by the scientists of TsNIIGAiK.

In order to improve cooperation between scientists employing different methods for studies of motion, the method is considered used by Copernicus for simultaneous determination of secular and periodic components of the Earth's orbital motion and rotation of its axis from the values of coordinates fixed in observations during 1500 years. In modern practice secular and periodic components are determined separately.

For determination of heliocentric motions which gave start to the origin of dynamics, Copernicus had to summarize the observed changes of spherical coordinates (hence leading role was played by inductive logic) whereas the thought of modern scientists is moving in opposite direction since they use numerical

theoretical models for interpretation of observed changes of coordinates. The development of inductive method is required for synthesis of information received from observations in astronomy, geodesy and so on, particularly for solution of the actual problem of separate determination of rotations of two celestial circles (equator and ecliptic) from analysis of observed coordinates' values [Tolchel'nikova S.A., 2010a]. The difficulties are shown in solution of this problem by means of mechanical methods and the simplified method employed in XVII century.

After Newton, Euler developed the dynamics of rigid bodies in general and in application to several planets. Attention is paid to Euler's studies of rotation of the Earth's axes in space (relative to the celestial coordinate system) and to his prediction of polar motion [Yurkina M.I., Tolchel'nikova S.A., 2009]. The influence of polar motion to the fluctuations of observed latitudes was found in more than hundred years after Euler's prediction. In XX century different International services have been organized for monitoring latitudes φ and longitudes λ of the observatories. Deviations from Euler's value for the period of free polar motion are under discussion up to now. Euler's ideas are shown to be helpful to modern geodesists and astronomers for consolidation of their efforts.

Short information [Tolchel'nikova S.A., Yurkina M.I., 2007] is given about the great influence of Euler's heritage and the International scientific conference "Leonard Euler and modern science" which took place in May 2007 in St.-Petersburg, where the authors presented the paper "Determination of the pole of the Earth's rotation", published in the volume "Leonard Euler and modern science", СПб., ПАИ, 2007, с.305-311.

Variation method of physical geodesy and collocation represented by Yu. Neyman and V. Bywshev described in the paper [Neyman Yu.M. & Bywshev V.A., 2010]. Functional approach to physical geodesy problems is described. Tractability of any geodetic measurement subject as a functional on geopotential is a guide for it. The geopotential is treated as element of a Hilbert space with reproducing kernel. Practical choosing of the kernel is founded on the well known isomorphism between reproducing kernel Hilbert spaces and covariance theory of random functions. The publication is an essential supplemented version of lecture notes published by MIIGAiK in 1985 - 1986.

It is often fruitful to use inhomogeneous information variable by accuracy and measurement unit for a perfect estimation of latent parameters. Ignoring of a physical value in this usage can produce not correct conclusions. The brief review of the iteration procedure of latent parameter estimation using inhomogeneous measurement results in the frame of the classic least square method presented in [Neyman Yu.M., 2008].

The outcome of the different geoid computation methods, based on gravity, using methods such as FFT, collocation or Stokes integration, all give the *gravimetric geoid* - which in principle refers to a global reference system, i.e. global center of mass, average zero-potential surface etc. Such a geoid may be substantially offset from the apparent geoid heights determined from GPS and leveling. The reason for the difference is mainly the assumption of zero-level: levelling zero refers

to local or regional mean sea-level, which is different from the global zero vertical datum due to the sea-surface topography. Since isolated territories are interested in using GPS to determine heights in a local vertical datum, to be consistent with existing levelling, there is a need to tailor the gravimetric geoid to the local level. The paper [Neyman Yu., Pham Hoang Lan, 2010] gives a survey how it can be done.

The equations of connections and corrections for the SST measured values are derived and proposed to Earth's gravity parameters improving in the paper [Neyman Y.M., et al, 2008].

The main information needed for handling with files in European Space Agency standard are described. Examples of output GOCE mission data are given in the article [Neyman Y.M., Hoziaichikov A.A., 2010].

A simple derive of the energy conservation of the Earth - satellite system is shown without using of the analytical mechanic terms. Gravity potential and disturbing gravitation modeling by the satellite state vectors are written [Neyman Y.M., Sugaipova L.S., 2011].

The theory of Fourier series sampling theorem is applied to calculation of covariance between point and mean values of various transforms of geopotential. The corresponding numerical results for the second derivatives of the disturbing potential are obtained to use for primary treatment of satellite gradiometry data [Sugaipova L.S., 2010].

The main results of theoretical and experimental research on optimal observation design and rigorous mathematical treatment of geodetic measurement for geodynamical purpose carried out in the Institute of Applied Mathematics of the Far East Division of the Russian Academy of Sciences during the last 20 years [Gerasimenko M.D., Kolomiets A.G., 2008].

The problem of the gross error diagnostics based upon the analysis of least-squares residuals has been carried out in [Gerasimenko M.D., 2008]. The general formula for calculation of the square root of the diagonal elements of covariance matrix of the residuals is given. This formula allows calculating the critical value of residuals, including measured directions even under terms when the position-finding angles are excluded from the system of normal equations.

Recommendations to take into account a physical correlation in mathematical treatment of geodetic measurements proposed in the article [Gerasimenko M.D., Shestakov N.V., 2008].

An explicit relationship between accuracy of estimated parameter of deformation model, weights of optimized GPS observations and degree of their correlation was obtained and investigated for the first time [Shestakov N.V., Gerasimenko M.D., 2009a]. It is shown that taking into account correlation of GPS measurements may lead to increase of formal precision of estimated parameters. Thus, we don't recommend to involve correlation of GPS measurements into optimization process without knowledge of real values of correlation coefficients.

The elasticity theory basic aspects necessary for deformation description and analysis, simple deformation models, deformation GNSS network and measurement characteristics, geodetic network optimal design problems are presented in

[Shestakov N.V., Gerasimenko M.D., 2009b, Shestakov N.V., et al., 2008]. Deformation GNSS network optimal design and most informative observation selection algorithms are proposed. Correlated geodetic measurement optimization problems are considered and analyzed. The major theoretical conclusions and practical developments are illustrated by numerical examples.

As it is shown by V.Krilov (2008a) the main disadvantage of the Encke method for numerical integration of celestial body movements, related to increasing computation operations in the account of two orbit integration, can be eliminated with the use of regularized equations. The example of integration of movement equations of two asteroids shows that the method Encke usage for regularized equations provides coordinate accuracy at the level of $6 \cdot 10^{-7}$ of astronomical unit at the 400 day interval with about 230 steps of the integration.

Using three Laplace integrals and integral of energy, regularized equations of undisturbed and disturbed movement of an astronomical object are received in the research [Krilov V.I., 2008b]. It is shown that undisturbed astronomical object coordinates can be presented as a function of initial conditions and a new independent variable. The example of integration of movement equations of the 1566 Icarus asteroid, having large orbital eccentricity, shows that the regularization provides coordinate accuracy at the level of $5 \cdot 10^{-7}$ of astronomical unit at the 400 day interval with about 430 steps of the integration.

The book “Spherical functions in a geodesy” written by Zbynek Nadenik the researcher from the Czech Republic were interpreted to Russian and edited as a student book [Nadenik Z., 2010].

References

1. Brovar V.V. (2010) Astro-geodetic leveling. Бровар Б.В. Астрономо-гравиметрическое нивелирование / *Гравиметрия и геодезия*. — М.: Научный мир, 2010. — с. 305-309
2. Brovar V.V. (2010) Geodetic data determination graviderivate method. Бровар Б.В. Гравидериватный метод определения геодезических данных / *Гравиметрия и геодезия*. — М.: Научный мир, 2010. — с. 359-361
3. Brovar V.V., Yurkina M.I. (2010) Application. Impact of scientists on theory and practice and evolution of the main task content of geodesy and gravimetry. Бровар Б.В., Юркина М.И. Приложение. Вклад ученых в теорию и практику и эволюция содержания главных задач геодезии и гравиметрии / *Гравиметрия и геодезия*. — М.: Научный мир, 2010. — с. 502
4. Brovar V.V., Yurkina M.I. (2010) Methodological aspects of the Earth's gravity field study. Бровар В.В., Юркина М.И. Методологические аспекты изучения поля земной силы тяжести / *Гравиметрия и геодезия*. — М.: Научный мир, 2010. — с. 21-34
5. Brovar V.V., Yurkina M.I. (2010) Relationship of geodesy and gravimetry with another sciences. Бровар Б.В., Юркина М.И. Связь геодезии и гравиметрии с

- другими науками / *Гравиметрия и геодезия*. — М.: Научный мир, 2010. — с. 34-40
6. Brovar V.V., Yurkina M.I. (2010) Бровар Б.В., Changes of content of tasks of geodesy and gravimetry. Юркина М.И. Изменения содержания задач геодезии и гравиметрии / *Гравиметрия и геодезия*. — М.: Научный мир, 2010. — с. 40-45
 7. Gerasimenko M.D. (2008) On the problem of gross measurement error estimation. Герасименко М.Д. К вопросу о выявлении грубых ошибок измерений // *Известия вузов. Геодезия и аэрофотосъемка*, № 6, 2010, с. 3-6.
 8. Gerasimenko M.D., Kolomiets A.G. (2008) Mathematical problem research in creation and processing of space geodetic networks for geodynamical purposes. Герасименко М.Д., Коломиец А.Г. Исследование математических проблем при построении и обработке космических геодезических сетей для целей геодинамики // *Дальневосточный математический журнал*, т. 8, № 1, 2008, с. 31-45.
 9. Gerasimenko M.D., Shestakov N.V. (2008) On the question of illusory and real troubles of correlated measurement processing. Герасименко М.Д., Шестаков Н.В. К вопросу о мнимых и действительных "неприятностях" обработки зависимых измерений // *Геодезия и картография*, №1, 2008, с. 13-14.
 10. *Gravimetry and Geodesy* (2010). *Гравиметрия и геодезия*. М.: Научный мир, 2010.-572 с.
 11. Demianov G.V., Mayorov A.N. (2010) On creation of the common Earth's height system. Демьянов Г.В., Майоров А.Н. Об установлении единой общеземной системы нормальных высот / *Гравиметрия и геодезия*. — М.: Научный мир, 2010. — с. 312-316
 12. Krilov V.I. (2008a) Encke method usage in the integration of regularized celestial body movement equations. Применение метода Энке при интегрировании регуляризованных уравнений движения небесных тел Крылов В.И. «*Известия вузов. Геодезия и аэрофотосъемка*», 2008, №5. С. 46-47
 13. Krilov V.I. (2008b) Usage of first integrals for regularization of celestial body motion equations. Использование первых интегралов для регуляризации уравнений движения небесных тел Крылов В.И. «*Известия вузов. Геодезия и аэрофотосъемка*», 2008, №4. С. 38-40
 14. Nadenik Z. (2010) *Spherical functions in a geodesy*, edited by Mazurova E.M. 2010, М: МИГАиК, 156 pp.
 15. Neyman Yu.M. (2008) On the problem of mathematical treatment of inhomogeneous measurements. Нейман Ю.М. К вопросу о математической обработке разнородных измерений // *Известия вузов. Геодезия и аэрофотосъемка*, №2, 2008, с.7 - 22.
 16. Neyman Yu.M., Bywshev V.A. (2010) Variation method of physical geodesy and collocation. Нейман Ю.М., Бышев В.А. Вариационный метод физической геодезии и коллокация / *Гравиметрия и геодезия*.- М.: Научный мир, 2010.- с.120-174

17. Neyman Yu., Pham Hoang Lan (2010) Local quasigeoid of isolated terrain. Нейман Ю.М., Фам Хоанг Лан. Локальный квазигеоид изолированной территории // Известия вузов. Геодезия и аэрофотосъемка, №5, 2010, с.31-36.
18. Neyman Y.M., Krylov V.I., Yashkin S.N. (2008) Equation of correction in SST for mission GOCE. Нейман Ю.М., Крылов В.И., Яшкин С.Н. Уравнения поправок в системе "спутник - спутник" миссии "GOCE" // Известия вузов. Геодезия и аэрофотосъемка, №5, 2008, с.52-54.
19. Neyman Y.M., Hoziaichikov A.A., On modern data saving and transferring formats in space geodesy (GOCE mission example). Нейман Ю.М., Хозяйчиков А.А. О современных форматах хранения и передачи данных в космической геодезии (на примере проекта GOCE) // Известия вузов. Геодезия и аэрофотосъемка, № 6, 2010.
20. Neyman Y.M., Sugaipova L.S. Notes on gravitation field determination by cinematic methods. Нейман Ю.М., Сугаипова Л.С. Замечания об определении гравитационного поля Земли кинематическими методами // Известия вузов. Геодезия и аэрофотосъемка, № 1, 2011 (in press).
21. Shestakov N.V., Gerasimenko N.D. (2009a) On the problem of deformation GPS network optimal design. Шестаков Н.В., Герасименко М.Д. К вопросу об оптимальном проектировании деформационных геодезических GPS сетей // Известия вузов. Геодезия и аэрофотосъемка, № 5, 2009, с. 11-16.
22. Shestakov N.V., Gerasimenko N.D. (2009b) Deformation GNSS network optimal design. Шестаков Н.В., Герасименко М.Д. Оптимальное проектирование деформационных GNSS сетей / - Владивосток: Дальнаука. 2009. 134 с. Монография.
23. Shestakov N.V., Gerasimenko N.D., Kasahara M. (2008) The more informative measurement design in geodynamical GNSS networks. Шестаков Н.В., Герасименко М.Д., Касахара М. Проектирование наиболее информативных измерений в геодинимических GPS/ГЛОНАСС сетях // Известия вузов. Геодезия и аэрофотосъемка, № 1, 2008, с. 18-27.
24. Sugaipova L.S. (2010) On co variation between point and mean values of various transforms of geopotential. Сугаипова Л.С. О ковариации между точечными и усредненными значениями вторых производных геопотенциала // Известия вузов. Геодезия и аэрофотосъемка, №5, 2010, с.36-44.
25. Tolchel'nikova S.A. (2008) The Peculiarity of Studies of Motions in Coordinate Systems Based on Observations of Infinitely Distant Bodies Толчельникова С.А. Особенности изучения движений в координатных системах, построенных по наблюдениям бесконечно далеких светил // Геодезия и картография, 2008, №6, с.10-17
26. Tolchel'nikova S.A. (2009) On Cooperation in Astrometry and Geodesy in Studies of the Earth's Rotation (point of view from astronomy) Толчельникова С.А. О взаимодействии астрометрии и геодезии в области изучения вращения Земли (взгляд астронома) Геодезия и картография, 2009, №8, с.21-29
27. Tolchel'nikova S.A., (2010) Terrestrial spherical coordinate system, determination of movements of the mean pole and surface points. Толчельникова

- С.А. Земная сферическая система координат, определение движений среднего полюса и земных пунктов / Гравиметрия и геодезия. — М.: Научный мир, 2010. — с. 45-54
28. Tolchel'nikova S.A. (2010a) Rotation of the Earth's axis relatively to the Sun and stars. С.А.Толчельникова. Вращение земной оси относительно Солнца и относительно звезд // Геодезия и картография, 2010, №9, с.17-26
29. Yurkina M.I. (2010) Theoretical foundation of leveling processing in the Earth's gravitation field. Юркина М.И. Теоретические основы обработки нивелирования в гравитационном поле Земли / *Гравиметрия и геодезия*. — М.: Научный мир, 2010. — с. 302-305
30. Tolchel'nikova S.A., Yurkina M.I. (2007) 300 Anniversary of L. Euler. С.А.Толчельникова, М.И.Юркина. К 300-летию со дня рождения Л.Эйлера // Геодезия и картография, 2007 №12, с.52-55.
31. Yurkina M.I. (2010) Earth's gravity field changes and vertical crustal movement determination. Юркина М.И. Изменения земного гравитационного поля и определение вертикальных движений земной коры / *Гравиметрия и геодезия*. — М.: Научный мир, 2010. — с. 459
32. Yurkina M.I., Tolchel'nikova S.A. (2009) Leonard Euler and Studies of the Earth's Rotation / In: LEONARD EULER 300th anniversary . М.И.Юркина, С.А.Толчельникова. Леонард Эйлер и изучение вращения Земли / В сборнике: Леонард Эйлер к 300летию со дня рождения. 2009 г. СПб, «Нестор-История», с.201-211

The Joint Height System Establishment Tasks (Demianov G.V., Mayorov A.N., Sermiagin R.A.)

Following to the tendency of globalization and simplifying practical application of Molodenskiy theory we have to accept joint origin of height reference and set $U_0=W_0$ picking out one more geoid – common earth equipotential surface which potential W_0 equals to potential U_0 of normal gravity on the reference ellipsoid [Demianov G.V., Mayorov A.N., Yurkina M.I., 2009, Demianov G.V., Mayorov A.N., 2010].

Common Earth ellipsoid represents the earth as an average value on the oceans in particular. Common earth ellipsoid taken as a normal one satisfies the condition $\int_{\sigma} \zeta d\sigma = 0$ for the whole earth.

Hence, meaning $U_0=W_0$ represents potential close to its mean value W_0 on the oceans the same way. Thus the solution $U_0=W_0$ will be an optimal approach to the geoid of *Gauss-Listing* in average for the whole earth.

The surface of common earth ellipsoid is the reference one along with determination of ellipsoid (geodetic) heights.

In that very case the use of normal heights H^γ and heights of quazigeoid ζ allows to agree in strong and definitely way the leveling data with the results of determination of ellipsoid (geodetic) heights H^G using satellite data.

Here we could not exclude possibility to use geopotential numbers. Just because we have strong coexistence between these values of normal height and geopotential:

$$W_i = \gamma_m H_i^\gamma$$

Due to the theory of M.S.Molodensky the sum of normal height and height of quazigeoid theoretically equals to geodetic height of the point of physical surface of the earth above common earth ellipsoid taken as a normal one.

$$H = H^\gamma + \zeta$$

where H is a geodetic height; H^γ – normal height; ζ – height of quazigeoid.

This condition is not true, stipulated by errors of measurements and differences of regional reference systems of normal heights.

The value of the correction to j-rang regional height system to come to common earth height system will be determined over whole sample of N – geodetic points for all those we know as follows

$$\Delta H_i^\gamma = \frac{1}{N} \sum_{i=1}^{i=N} [H_i^G - (H_i^\gamma + \zeta_i)]$$

Thus, fixed and marked initial point where the normal height equals to zero is not exists. Normal height is zero in that very point on the earth surface where true potential W_i equals to normal one U_0 on the surface of the common ellipsoid. In this very point the surfaces of geoid and quazigeoid supposed to be coincided: $W_i = W_0 = U_0$. In principal, position of the point could not be known.

In these conditions, the problem to create new modern planetary gravitation models becomes very important. In 2008 TsNIIGAiK construct new global gravitational model GAO 2008 using given projects (GRACE and CHAMP) to solve the problem of creation of gravimetrical geoid.

Using models GAO 2008 and EGM 2008 we valued possibilities to determine corrections to regional systems of normal heights according to suggested technology. The results of such valuation are shown in table 1. All scope of using data was divided at three groups on territorial location. First group includes the data for the territory of the USA, second – for the territory of West Europe. For the territory of Russia we used data of its European part. All calculations for the both models were done due to total range of coefficients up to 360- range.

Corrections to the regional height systems.

| Region | Mean difference | | Number of points |
|-----------------|-----------------|---------|------------------|
| | H_{mean} (m) | | |
| | GAO2008 | EGM2008 | |
| USA | +0.55 | +0.53 | 6169 |
| West Europe | +0.07 | +0.09 | 87 |
| European Russia | -0.09 | -0.14 | 320 |

The principal to divide the data for groups first of all is connected with those idea that each group is using its own system of leveling heights. For the territory of the USA – NAVD-88, for the territory of West Europe – Amsterdam system, for Russia – Baltic (Kronshtadt) system.

Thus, ΔH_{mean} values for different groups characterize difference between height systems for the territories of the USA, Europe and Russia from common earth one established according to the above mentioned principles. The data about the difference between leveling data of Amsterdam and Baltic system proves the actual situation of the obtained results. Due to leveling data and GAO2008 model data this difference is equal to 16cm.

Because of preliminary evaluation of model EGM-2008 along with creation of the model we could assume that Bouguer anomalies were used as an initial data for the territory of Russia but not anomalies on the free air. Calculated differences ΔH_{mean} are having systematic differences correlated over amount and sign with the Bouguer correction.

We have all base to think that the use of data of European space complex GOCE will bring to substantial identification of parameters of global navigation models and consequently will increase accuracy of construction of common European system of normal heights.

It is not possible to solve the problems both of creation of precise quasigeoid (and creation of global models as well) and determination of joint system of heights independently. It is not difficult to calculate, if we have systematic error about 0,1mgl in the anomalies of gravity for the territory of about 1000km in radius this will bring to the error of 10cm in determination of height of quasigeoid. In its turn, if a system of heights for the territory differs at 30cm from the common earth $W_0=U_0$ (and this is quite real case), this is a reason of a systematic error of gravity anomaly at 0,1mGl. That's why both tasks must be solved together.

Globalization of modern geodesy gives the tusk to create international integration on solving fundamental problems. Exactly wide international integration had provided creation of reference geodetic network spread well enough over all territory of the globe as well as precise realization of common earth geocentrical coordinate system. It is only possible to solve the problem of creation of joint common earth system of heights on the modern level of accuracy in condition of wide international cooperation. In this condition we have to expect sufficient compensation of the influence of errors of gravimetric quasigeoid helpfully

to the condition

$$\int_{\sigma} \zeta d\sigma = 0.$$

The first order and required elements of such cooperation should be the tasks as follow:

- leveling connection of State (national) leveling nets of European states;
- creation of joint massive of data of mean anomalies over trapeziums of 5x5 for the North hemisphere;
- build precise quasigeoid of Europe and Asia continent;
- construction of precise planetary models of gravitational field of earth using modern space missions GRACE, CHAMP and GOCE.

The result of such cooperation will be creation of joint common system of normal heights.

References

Demianov G.V., Mayorov A.N., Yurkina M.I. (2009) The construction of the general Earth system of normal heights. *Mission and Passion: Science. A volume dedicated to Milan Burša on the occasion of his 80th birthday. Edited by P. Holota.* p.65-76

Demianov G.V., Mayorov A.N. (2010) On creation of the common Earth's height system. Демьянов Г.В., Майоров А.Н. Об установлении единой общеземной системы нормальных высот / Гравиметрия и геодезия. — М.: Научный мир, 2010. — с. 312-316